

(2 AD / TK)

70005



60280

\*Bk.: S.7



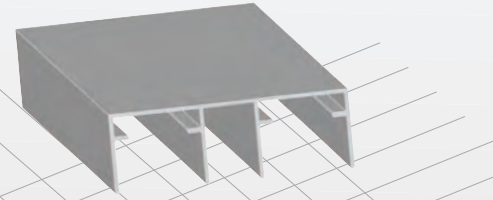
(2 AD / TK)

70010



60025

\*Bk.: S.6



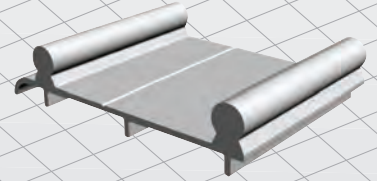
(2 AD / TK)

70015



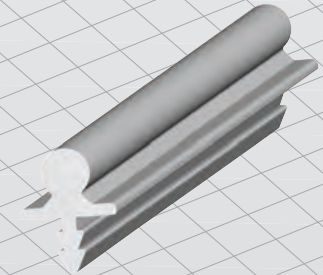
60030

\*Bk.: S.6



60035

\*Bk.: S.8



70000

(TAKIM RESMİ)



KOD	AÇIKLAMA	KUTU	KOLİ
70000	80 kg Ayarlı Mekanizma Takım	2 Tk	48 Tk

KOD	AÇIKLAMA	KUTU	KOLİ
70005	Tek Makara	6 Ad	144 Ad
70010	Üst Kılavuz (Sağ-Sol)	5 Tk	120 Tk
70015	Stoper	40 Ad	960 Ad
70020	Üst Kılavuz + Stoper	5 Tk	120 Tk



### 70000 (80-kg Ayarlı Sistem)

SKM 80 ayarlı sürgü kapak mekanizması, 80 kg taşıma kapasitelidir. Altta poliamid kaplı rulmanlı tekerlekle çalışır. Ayarlı alt mekanizma sayesinde kapağın gönyesi düzeltilebilir.



(2 AD / TK)

70105



60280

\*Bk.: S.7



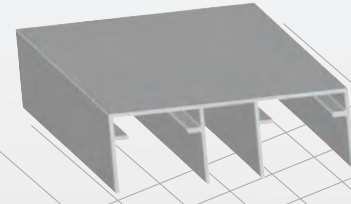
(2 AD / TK)

70010



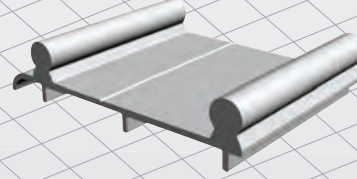
60025

\*Bk.: S.6



60030

\*Bk.: S.6



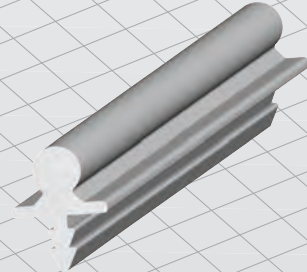
(2 AD / TK)

70015



60035

\*Bk.: S.8



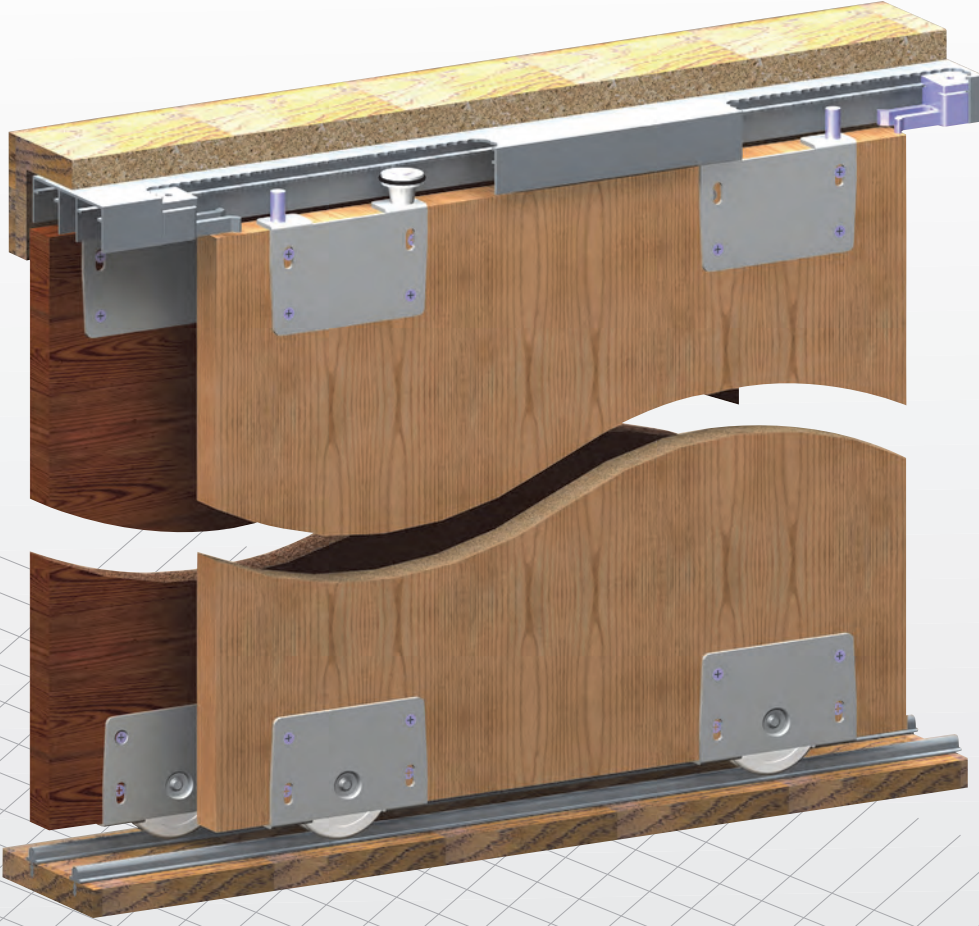
70100

(TAKIM RESMİ)



KOD	AÇIKLAMA	KUTU	KOLİ
70100	80 kg Ayarsız Mekanizma Takım	2 Tk	72 Tk

KOD	AÇIKLAMA	KUTU	KOLİ
70105	Makara	6 Ad	216 Ad
70010	Üst Kılavuz (Sağ-Sol)	5 Tk	120 Tk
70015	Stoper	40 Ad	960 Ad
70020	Üst Kılavuz + Stoper	5 Tk	120 Tk



### 70100 (80 kg Ayarsız Sistem)

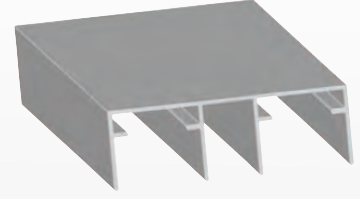
SKM 80 sürgü kapak mekanizması, 80 kg taşıma kapasitelidir.  
18 mm sunta kapaklar için kullanılır.  
Altta poliamid kaplı rulman tekerlekle çalışır.





60025

\*Bk.: S.6



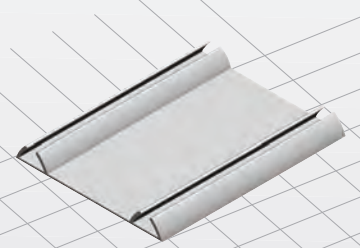
60280

\*Bk.: S.7



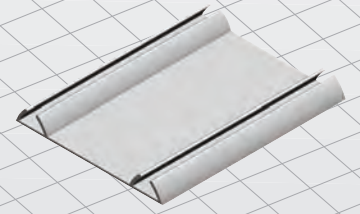
60270

\*Bk.: S.7



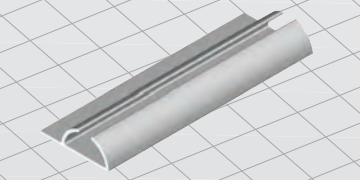
60275

\*Bk.: S.7



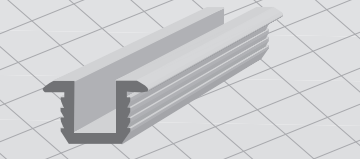
60500

\*Bk.: S.8



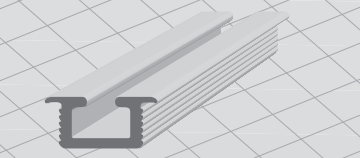
60625

\*Bk.: S.8



60626

\*Bk.: S.9



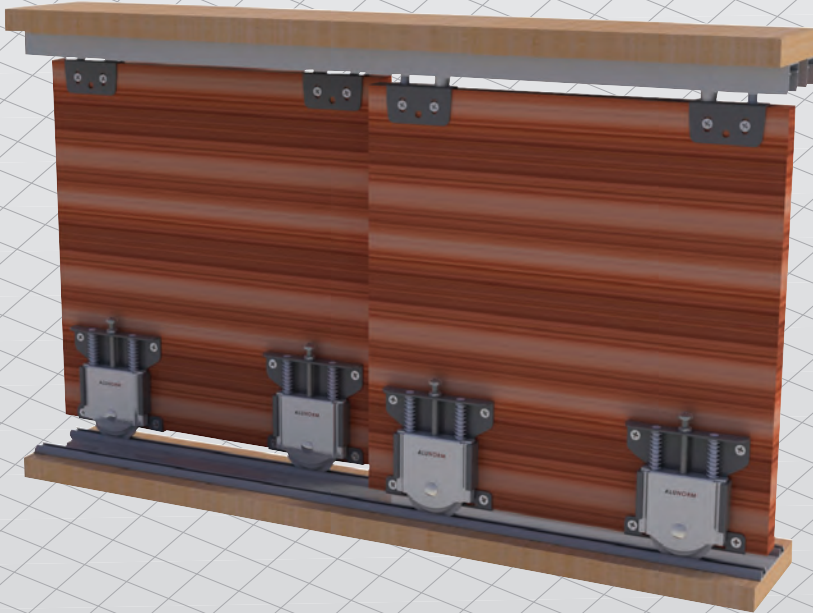
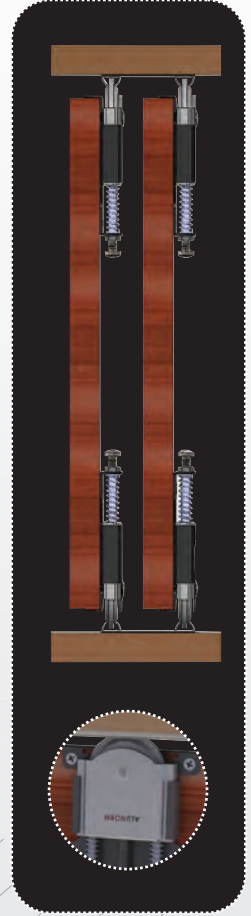
KOD	AÇIKLAMA	KUTU	KOLİ
70200	80 kg Sistem Makara	4 Ad	80 Ad
38901	Soft Sistem	2 Ad	24 Ad
38902	Ray İçi Yavaşlatıcı	4 Ad	100 Ad

KOD	AÇIKLAMA	KUTU	KOLİ
70155	Üst Kılavuz	8 Tk	192 Tk
70015	Stoper	40 Ad	960 Ad



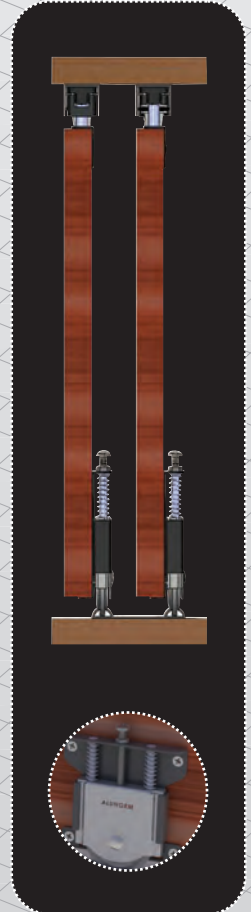
### 70200 (80 kg Pano Mekanizması)

1 Kapakta 4 makara kullanılır.  
Alt ve üst ray olarak 60270 / 60275 kullanılır.



### 70200 (80 kg Pano Mekanizması Takımı)

PKM 80 ayarlı sürgü kapak mekanizması, 80 kg taşıma kapasitelidir.  
Alt ve üst poliamid kaplı rulmanlı tekerlekle çalışır.  
1 Kapakta 2 adet 70200 makara, 2 adet 70155 kılavuz kullanılır.  
Alt ray olarak 60270 / 60275, üst ray olarak 60280 kullanılır;  
veya alt ray olarak 60500, üst ray olarak 60025 kullanılır.



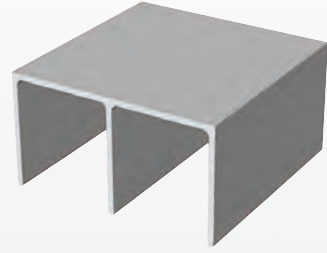
(2 AD / TK)

70050



60050

\*Bk.: S.10

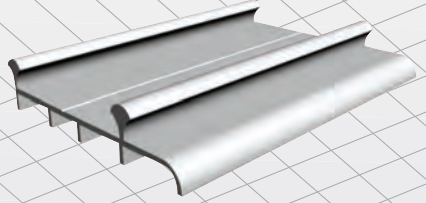


(2 AD / TK)

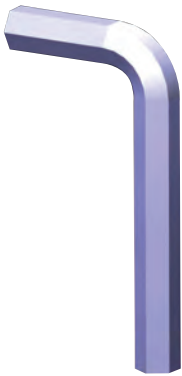


60085

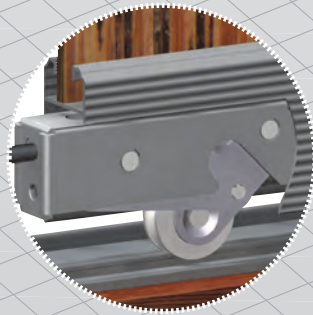
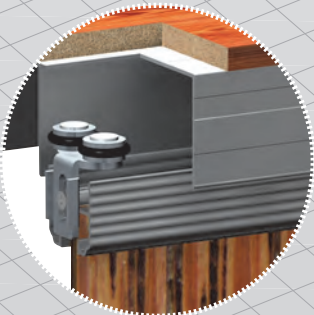
\*Bk.: S.11

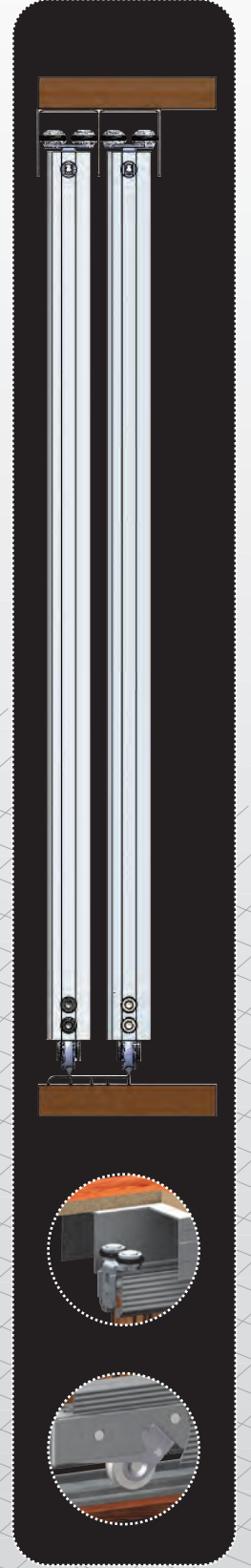
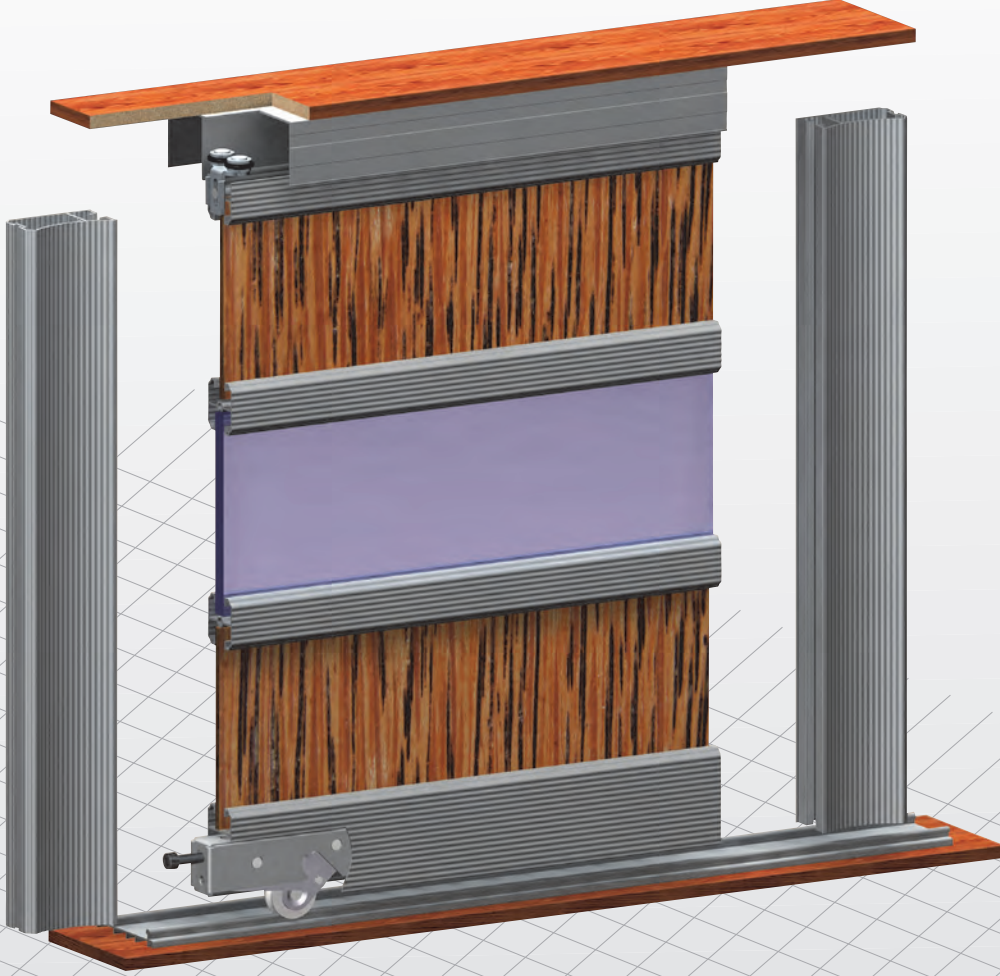


(1 AD / TK)



KOD	AÇIKLAMA	KUTU	KOLİ
70050	BETA Mekanizma	1 Tk	50 Tk





70050 - BETA (Zeminden Tavana Pano Sistemi)



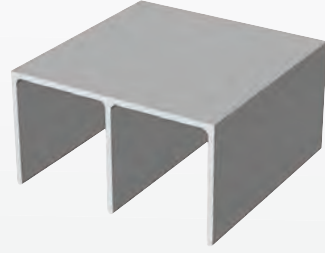
(2 AD / TK)

70060



60050

\*Bk.: S.10

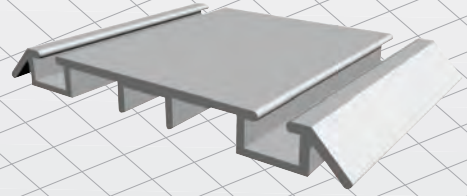


(2 AD / TK)

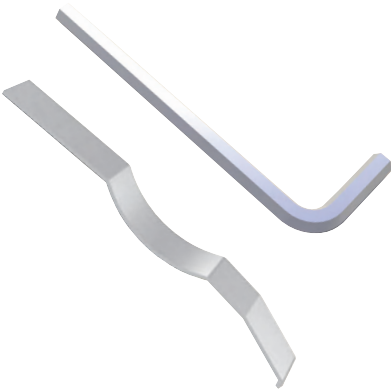


60080

\*Bk.: S.11

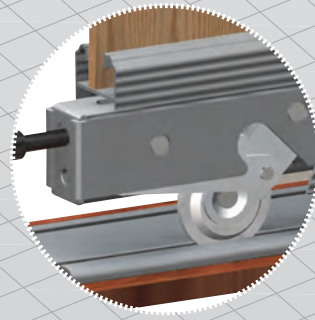
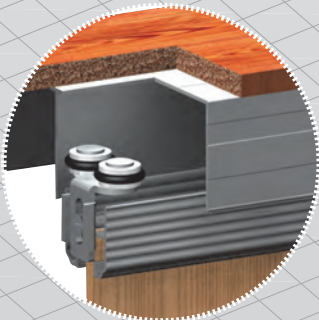


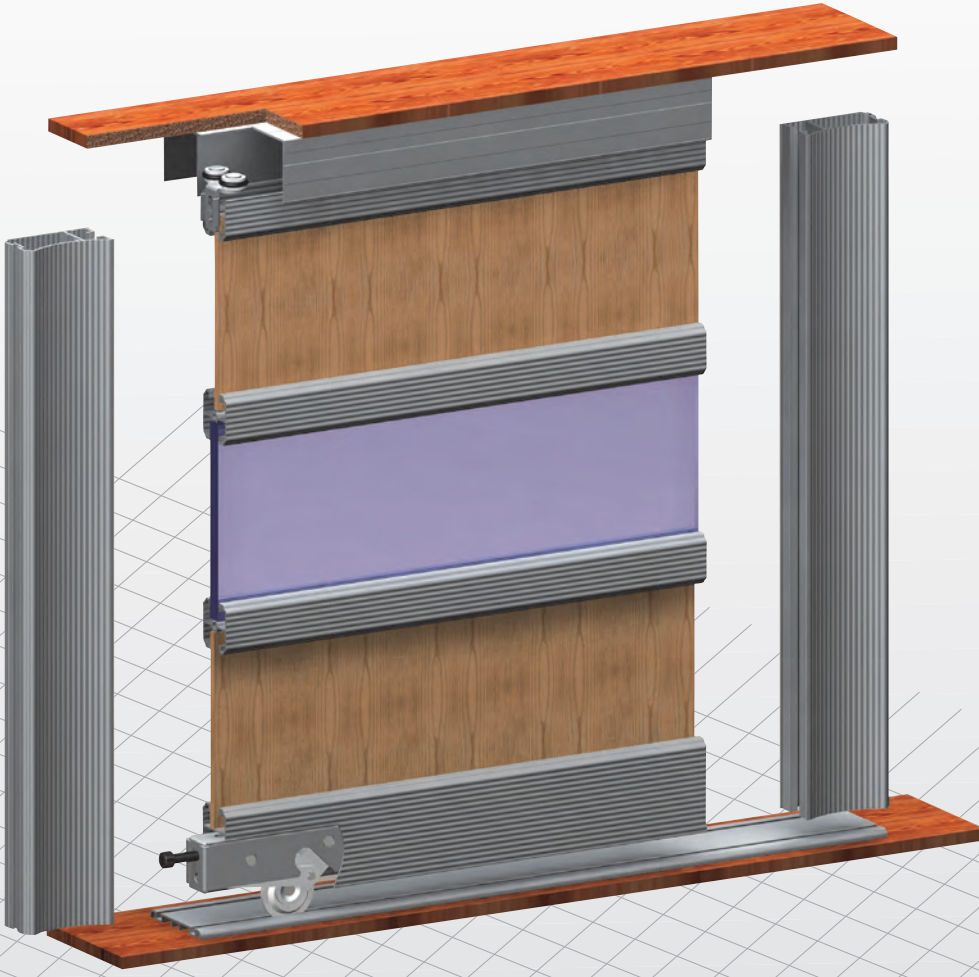
(1 AD / TK)



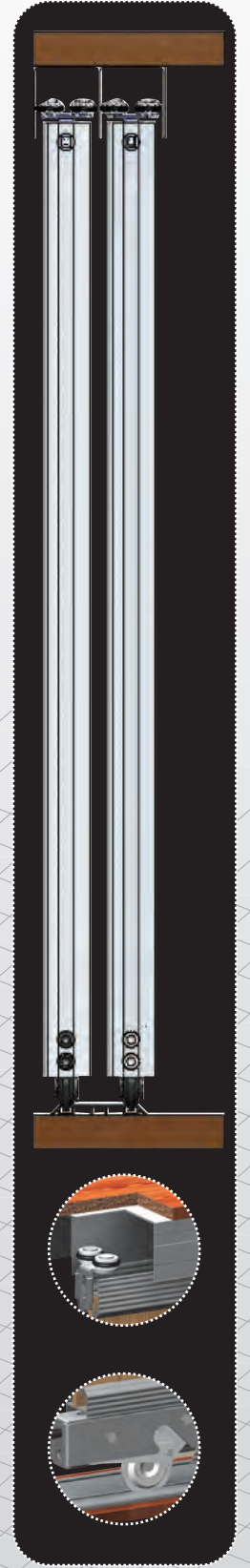
KOD	AÇIKLAMA	KUTU	KOLİ
70060	GAMA Mekanizma	1 Tk	50 Tk

(2 AD / TK)





70060 - GAMA (Zeminden Tavana Pano Sistemi)



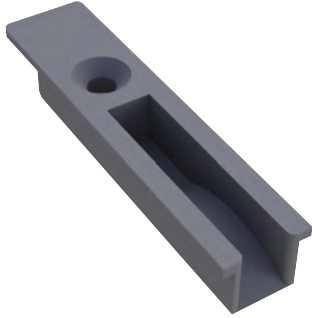
70255



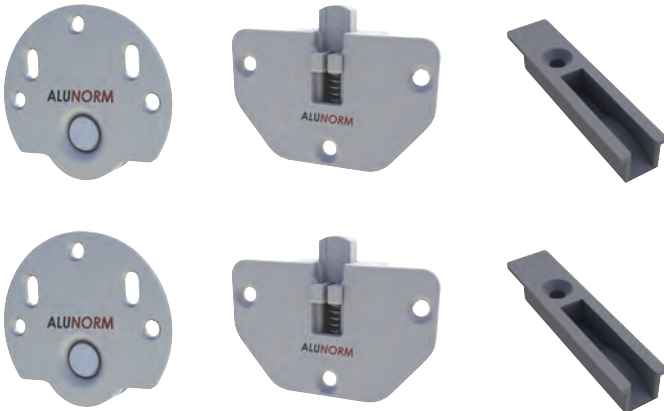
70260



70265



70250



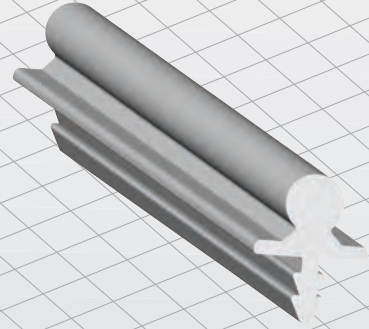
60215

\*Bk.: S.9



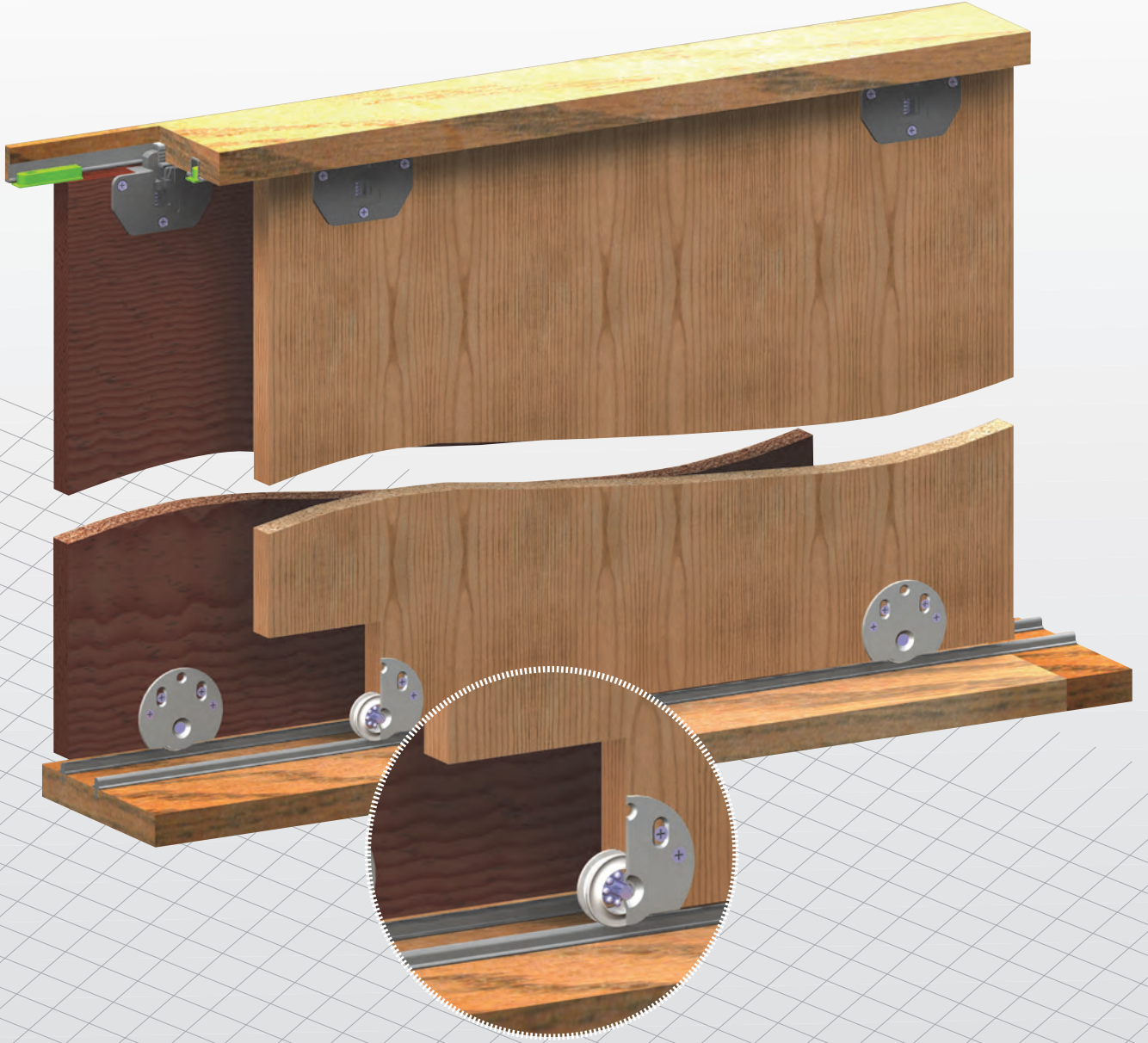
60040

\*Bk.: S.8

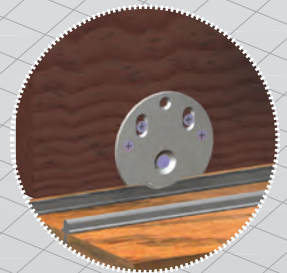


KOD	AÇIKLAMA	KUTU	KOLİ
70250	30 kg Mekanizma Takım	4 Tk	144 Tk

KOD	AÇIKLAMA	KUTU	KOLİ
70255	Tek Makara	24 Ad	864 Ad
70260	Üst Kilavuz	14 Ad	504 Ad
70265	Stoper	50 Ad	1800 Ad



70250 (30 Kg Hafif Sürgü Kapak Mekanizması)



70305



70260



70265



70300



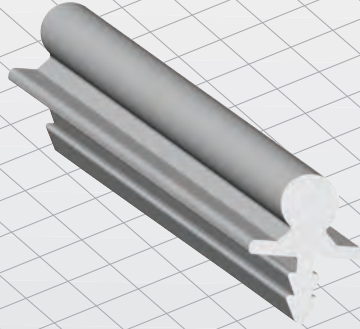
60215

\*Bk.: S.9



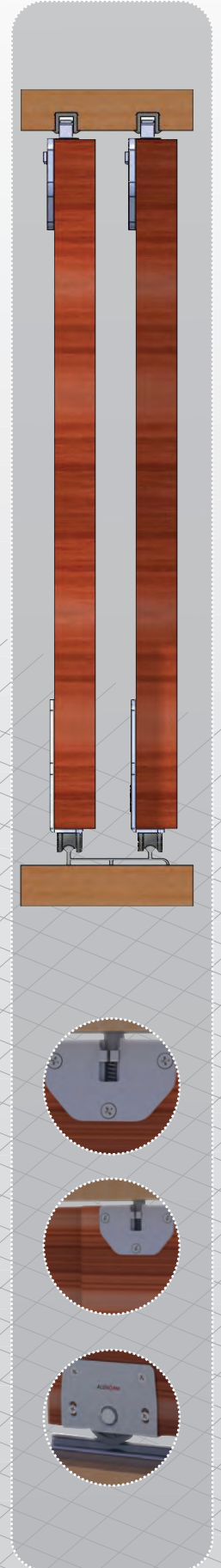
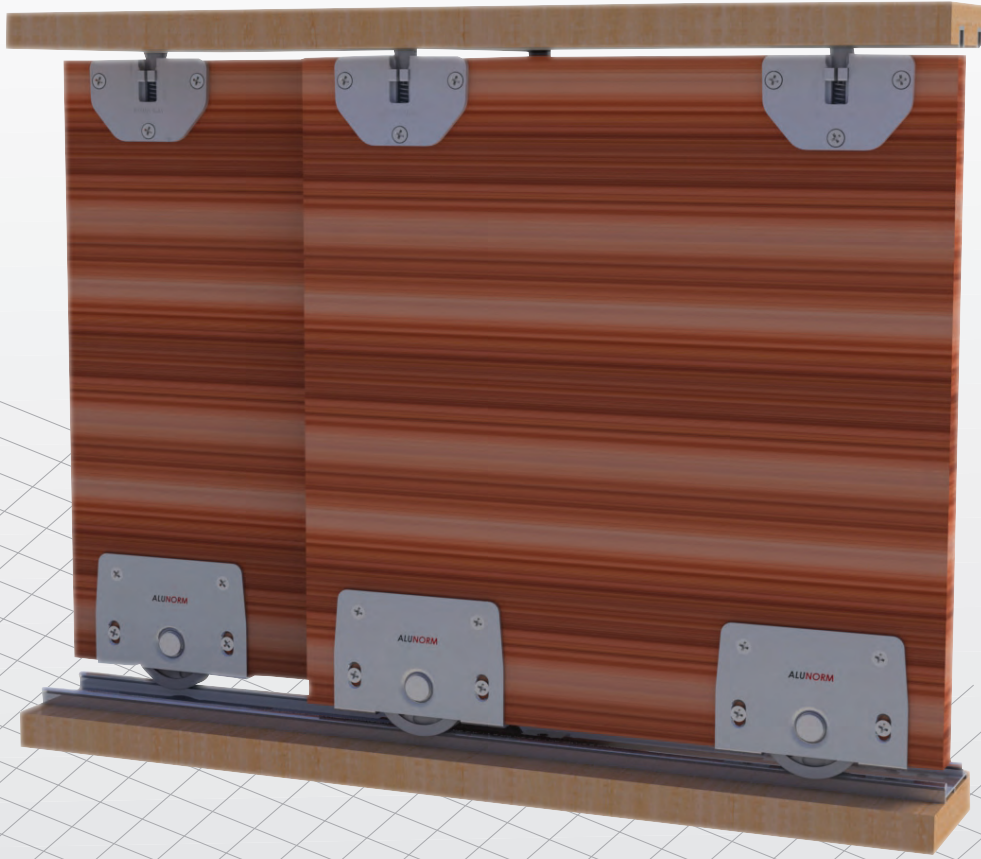
60035

\*Bk.: S.8



KOD	AÇIKLAMA	KUTU	KOLİ
70300	60 kg Mekanizma Takım	2 Tk	72 Koli

KOD	AÇIKLAMA	KUTU	KOLİ
70305	Tek Makara	6 Ad	216 Ad
70260	Üst Kılavuz	14 Ad	504 Ad
70265	Stoper	50 Ad	1800 Ad



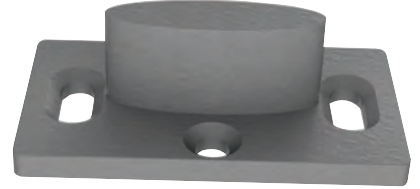
70300 (60 Kg Sürgü Kapak Mekanizması)

## 70400 SÜRGÜ KAPAK TAKIMI

ÜST MEKANİZMA



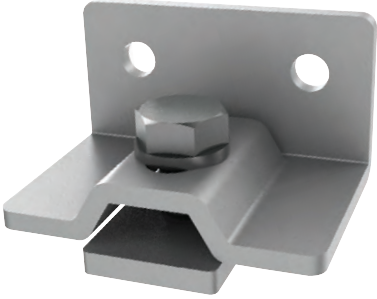
ALT KILAVUZ



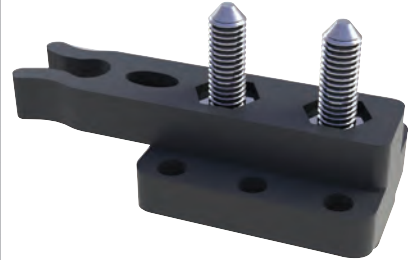
AYAR ANAHTARI



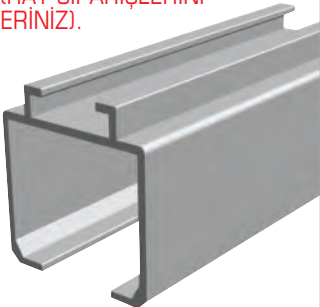
ÜST RAY ASKI APARATI



STOPER

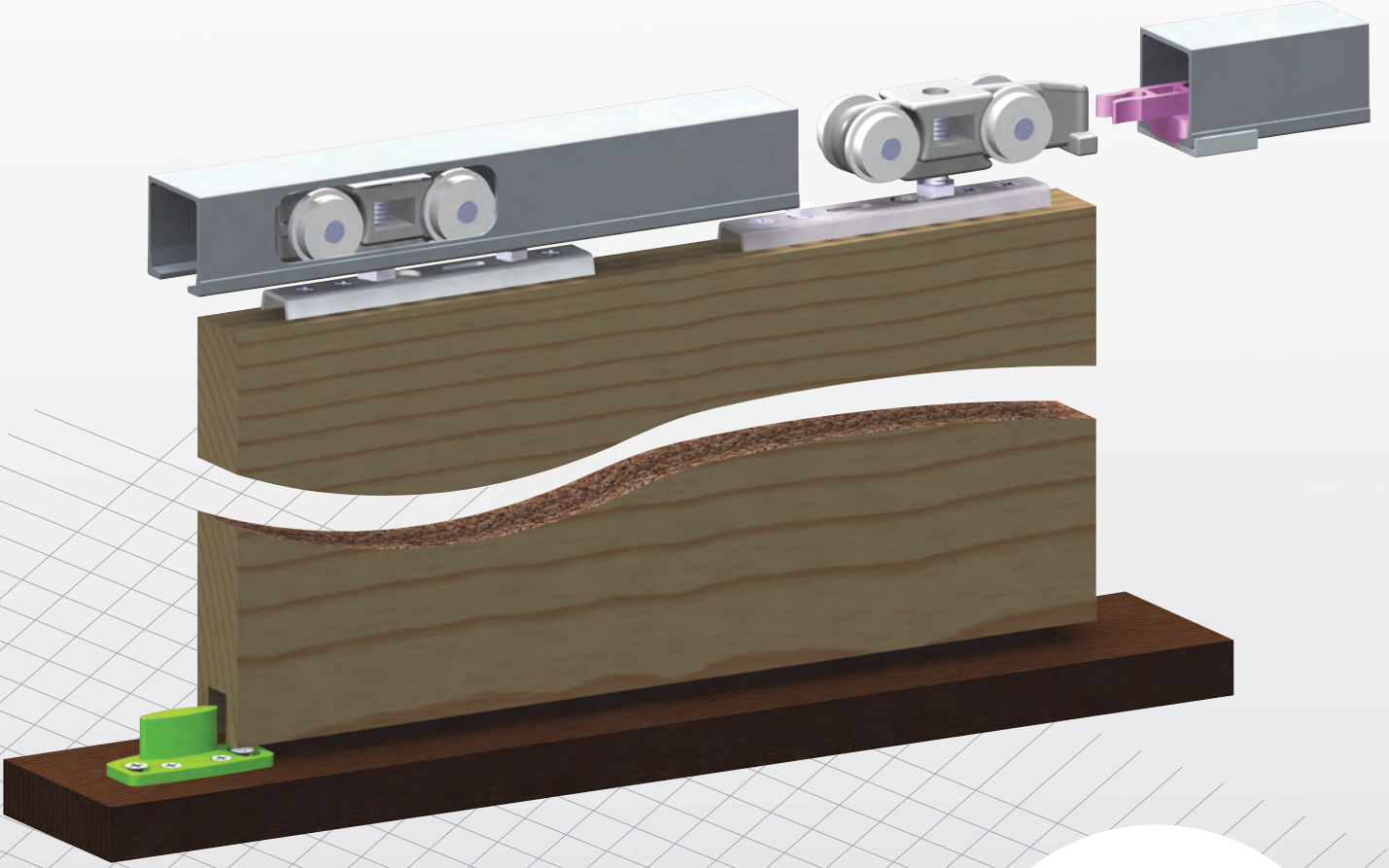


KOD: 60045  
ÜST RAY (RAY SİPARİŞLERİNİ  
AYRICA VERİNİZ).

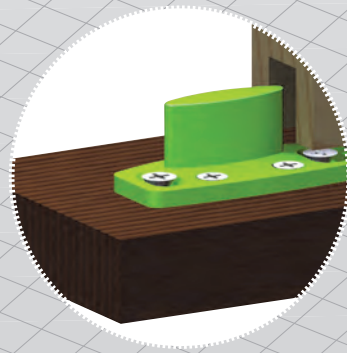
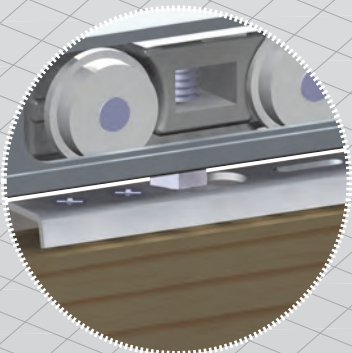


\*Bk.: S.7

KOD	AÇIKLAMA	KUTU	KOLİ
70400	Sürgü Kapak Takım	1 Tk	36 Tk



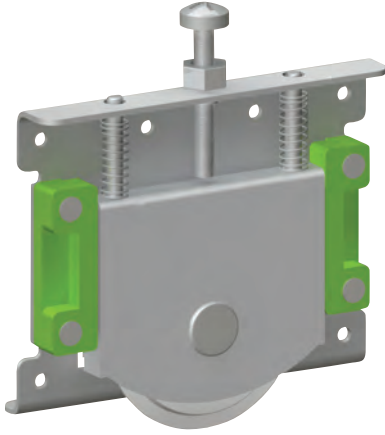
70400 SÜRGÜ KAPAK TAKIMI(60 Kg. Sürgülü Kapı Sistemi)





## PKM 80 (PLASTİKLİ)

70220

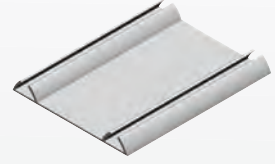


PKM 80 (Plastikli)

•Alt ve üst ray 55 mm

60270

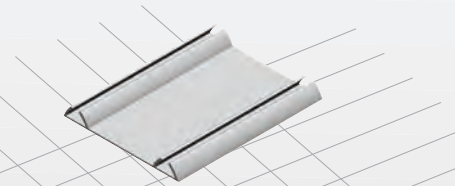
\*Bk.: S.7



•Alt ve üst ray 60 mm

60275

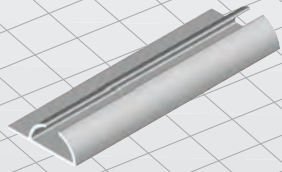
\*Bk.: S.7



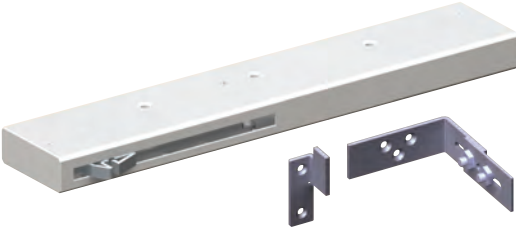
•Tekli alt ray 24 mm

60500

\*Bk.: S.8



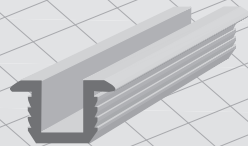
38901



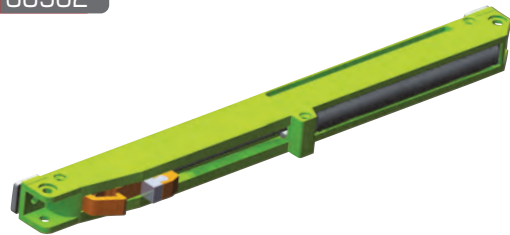
SOFT SİSTEM

60625

\*Bk.: S.8



38902



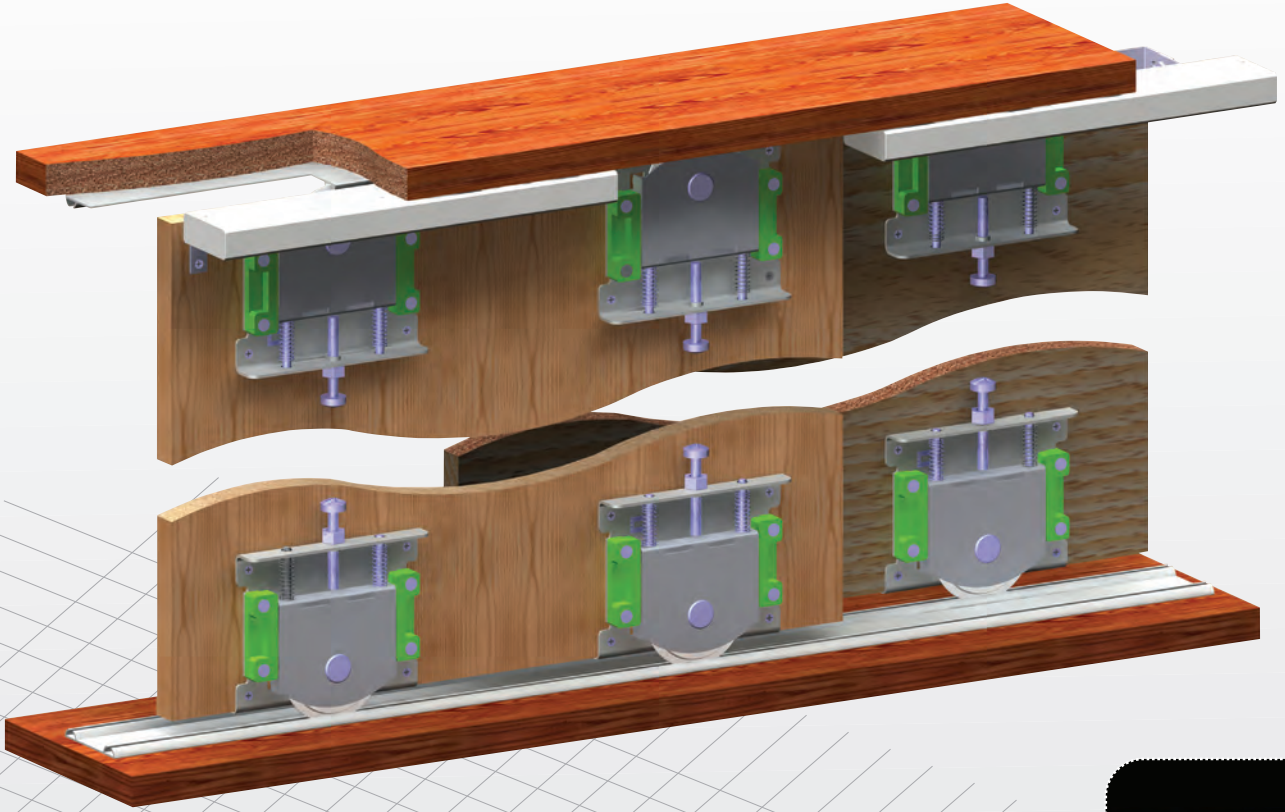
RAY İÇİ YAVAŞLATICI

60626

\*Bk.: S.9



KOD	AÇIKLAMA	KUTU	KOLİ
70220	80 kg Plastikli Makara	4 Ad	80 Ad
38901	Soft Sistem	2 Ad	24 Ad
38902	Ray İçi Yavaşlatıcı	4 Ad	100 Ad



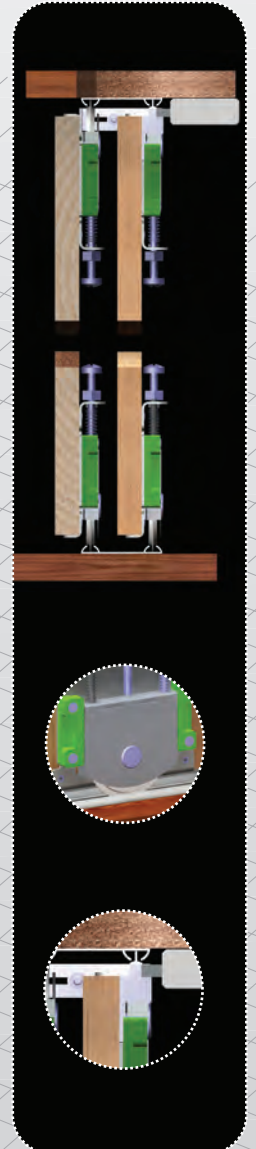
### 70220 PKM 80 - Plastikli (80 kg Pano Mekanizma)

PKM 80 Plastikli Sürgü Kapak Mekanizması, 80 KG taşıma kapasitelidir.

Alt ve üst poliamid kaplı rulmanlı tekerlekle çalışır.

Alt ve üst ray olarak 60270 / 60275 profilleri kullanılır.

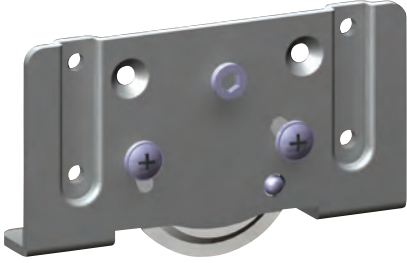
Tekli alt ray olarak 60500 profili kullanılır.



SKM 70 AYARLI (70 Kg. Ayarlı Sistem)

(2 AD / TK)

70035



(2 AD / TK)

70010



(2 AD / TK)

70015

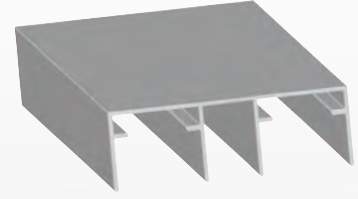


70030

(TAKIM RESMİ)



•Üst ray çiftli



60025

\*Bk.: S.6

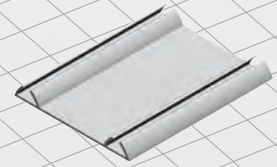
•Üst ray tekli



60280

\*Bk.: S.7

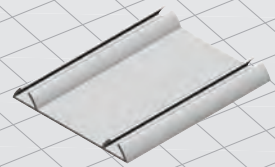
•Alt ve üst ray 55 mm



60270

\*Bk.: S.7

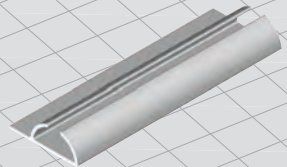
•Alt ve üst ray 60 mm



60275

\*Bk.: S.7

•Tekli alt ray 24 mm

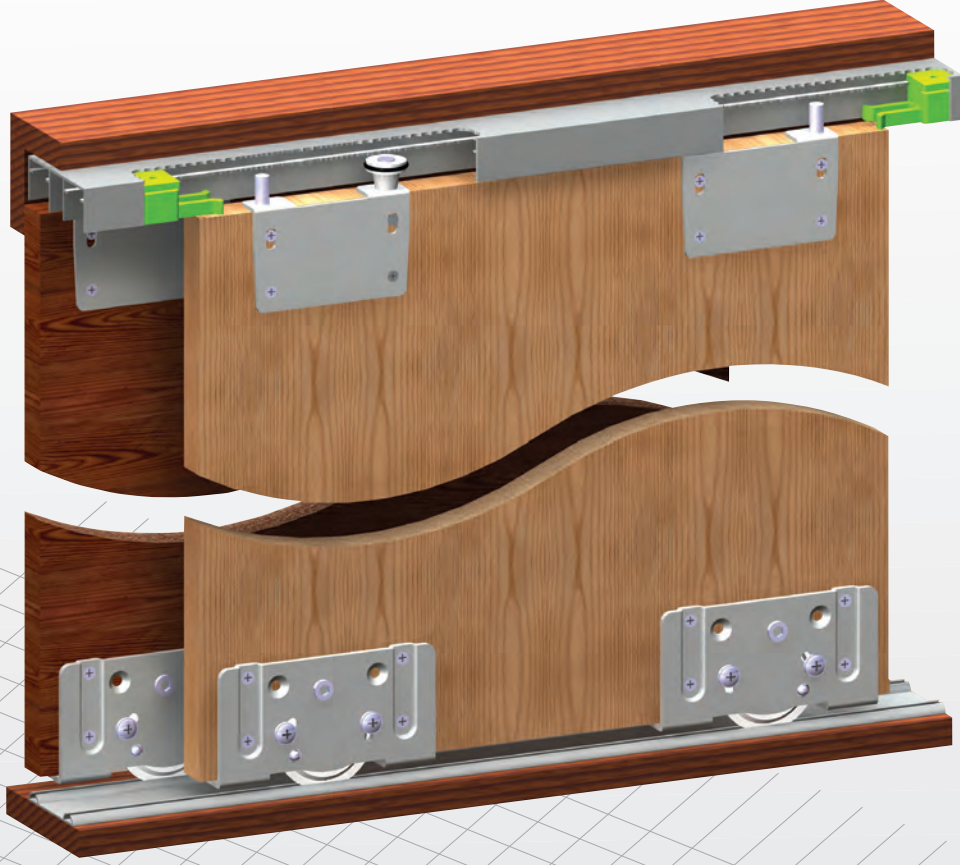


60500

\*Bk.: S.8

KOD	AÇIKLAMA	KUTU	KOLİ
70030	70 kg Ayarlı Mekanizma Takım	2 Tk	48 Tk

KOD	AÇIKLAMA	KUTU	KOLİ
70035	Tek Makara	6 Ad	144 Ad
70010	Üst Kılavuz (Sağ-Sol)	5 Tk	120 Tk
70015	Stoper	40 Ad	960 Ad
70020	Üst Kılavuz + Stoper	5 Tk	120 Tk



### 70030 SKM 70 - Ayarlı (70 kg Ayarlı Sistem)

SKM 70 ayarlı sürgü kapak mekanizması 70 kg. taşıma kapasitelidir.

Altta poliamid kaplı rulmanlı tekerlekle çalışır.

Alt ray için 60270 profili kullanılır. Geniş kapaklar için 60275 profili kullanılır.

Çiftli üst ray için 60025 profili kullanılır.

Tekli kapaklarda ise alt ray 60500 profili kullanılır.

Üst ray için 60280 profili kullanılır.

Ayarlı alt mekanizması sayesinde kapağın gövdesi düzeltilebilir.



## SKM 70 AYARSIZ (70 Kg. Ayarsız Sistem)

(2 AD / TK)

70135



(2 AD / TK)

70010



(2 AD / TK)

70015

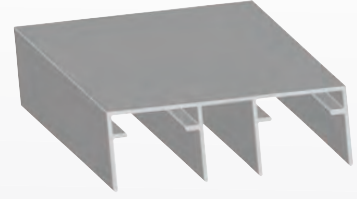


70130

(TAKIM RESMİ)



•Üst ray çiftli



60025

\*Bk.: S.6

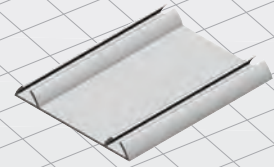
•Üst ray tekli



60280

\*Bk.: S.7

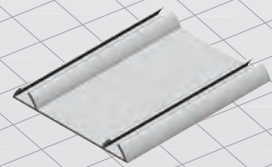
•Alt ve üst ray 55 mm



60270

\*Bk.: S.7

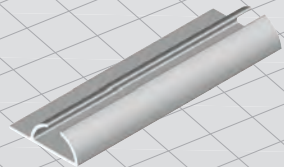
•Alt ve üst ray 60 mm



60275

\*Bk.: S.7

•Tekli alt ray 24 mm

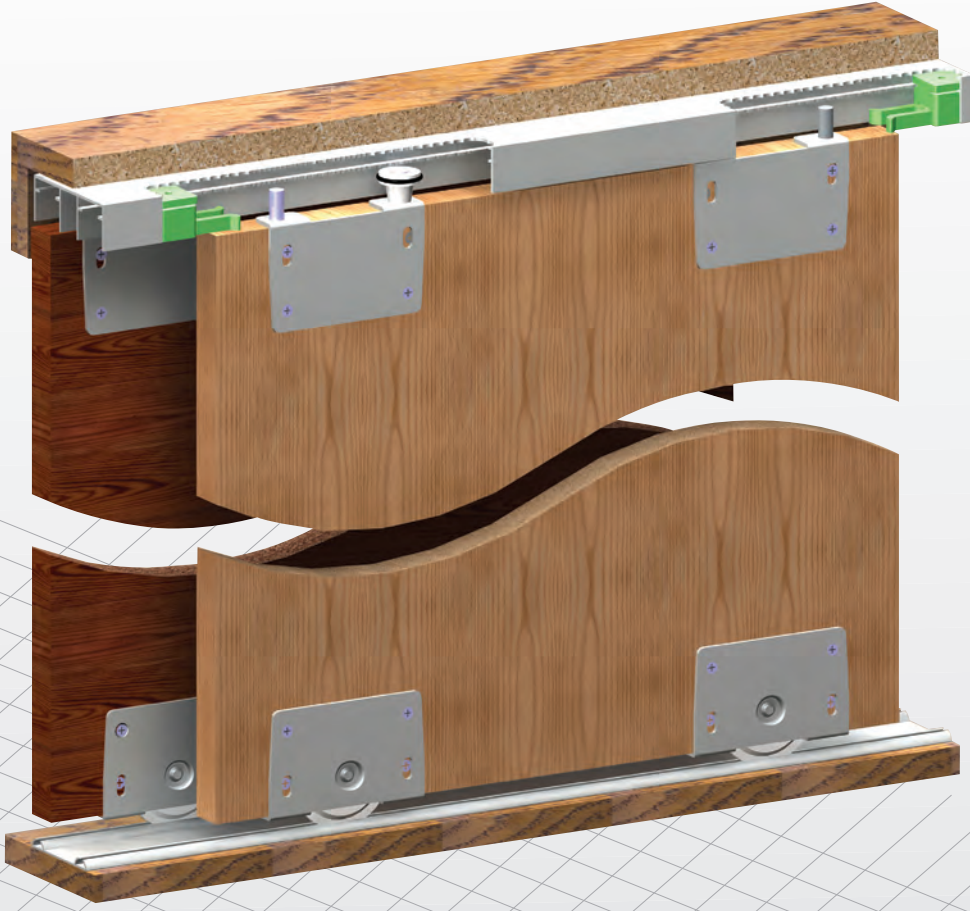


60500

\*Bk.: S.8

KOD	AÇIKLAMA	KUTU	KOLİ
70130	70 kg Ayarsız Mekanizma Takım	2 Tk	72 Tk

KOD	AÇIKLAMA	KUTU	KOLİ
70135	Tek Makara	6 Ad	216 Ad
70010	Üst Kılavuz (Sağ-Sol)	5 Tk	120 Tk
70015	Stoper	40 Ad	960 Ad
70020	Üst Kılavuz + Stoper	5 Tk	120 Tk



### 70130 SKM 70 - Ayarsız (70 kg Ayarsız Sistem)

SKM 70 ayarsız sistem mekanizmasıdır.

70 kg taşıma kapasitelidir.

Altta poliamid kaplı rulmanlı tekerlekle çalışır.

Alt ray 60270 profili kullanılır. Geniş kapaklar için 60275 profili kullanılır.

Çiftli üst ray için 60025 profili kullanılır.

Tekli kapaklarda ise alt ray 60500 profili kullanılır.

Üst ray için 60280 profili kullanılır.

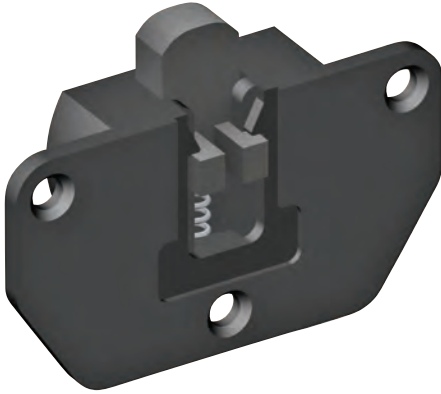


## SKM 37 (35~40 Kg. Hafif Sürgü Kapak Mekanizması)

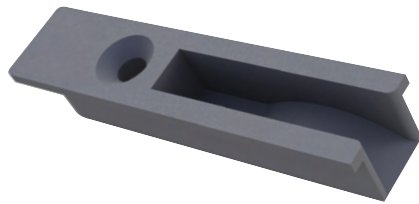
70285



70260



70265



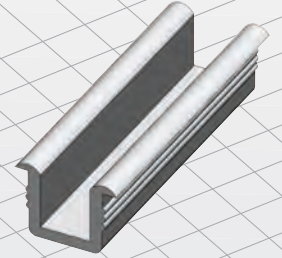
70280



•PVC üst ray tekli

60215

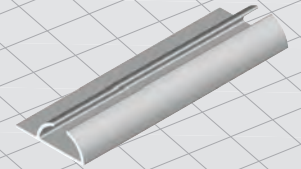
\*Bk.: S.9



•Tekli alt ray 24 mm

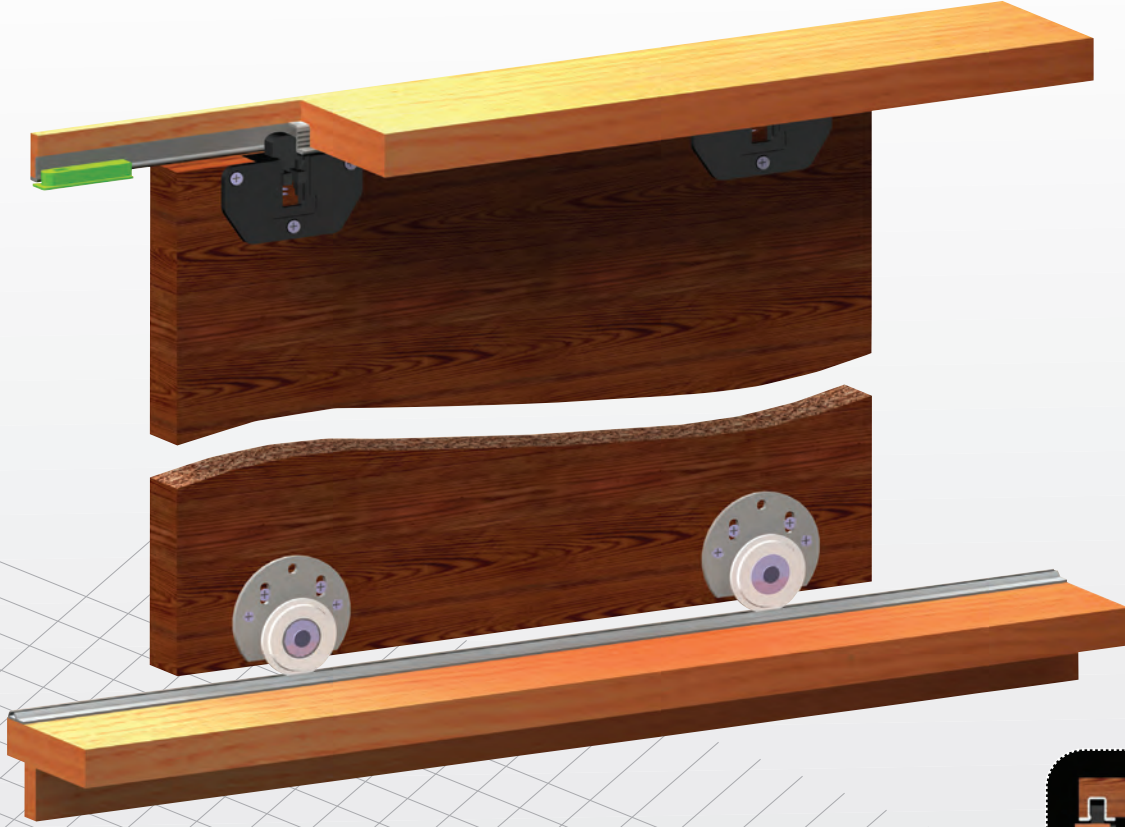
60500

\*Bk.: S.8



KÖD	AÇIKLAMA	KUTU	KOLİ
70280	30 kg Mekanizma Takım	4 Tk	144 Tk

KÖD	AÇIKLAMA	KUTU	KOLİ
70285	Tek Makara	24 Ad	864 Ad
70260	Üst Kılavuz	14 Ad	504 Ad
70265	Stoper	50 Ad	1800 Ad



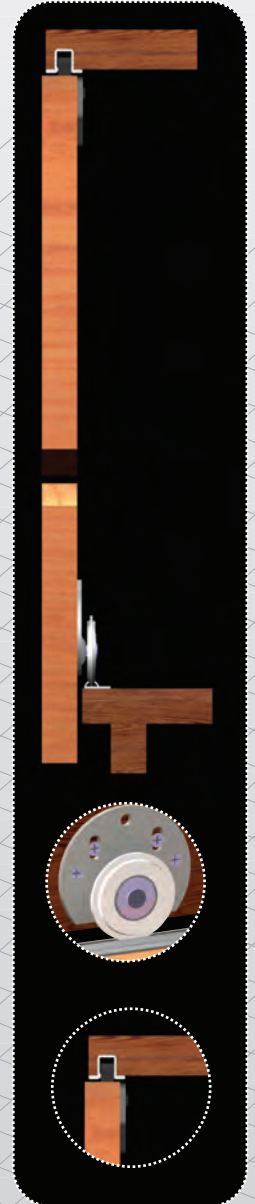
### 70280 SKM 37 (35~40 Kg. Hafif Sürgü Kapak Mekanizması)

SKM 37 hafif sürgü kapak mekanizmasıdır.

35~40 Kg taşıma kapasitelidir.

Üst ray olarak 60215 profili kullanılır.

Tek ray olarak 60500 profili kullanılır.





## SKM 37-1 (35~40 Kg. Hafif Sürgü Kapak Mekanizması)

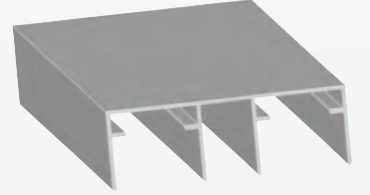
70285



•Çiftli üst ray

60025

\*Bk.: S.6



•Tekli üst ray 24 mm

60280

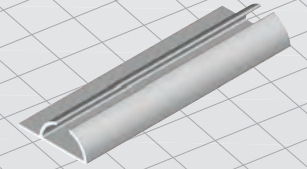
\*Bk.: S.7



•Tekli alt ray 24 mm

60500

\*Bk.: S.8



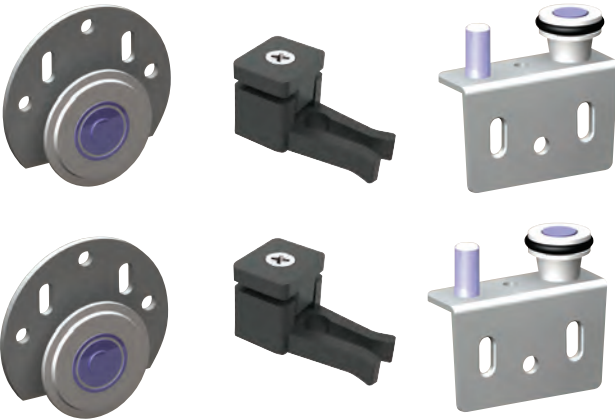
70015



70155

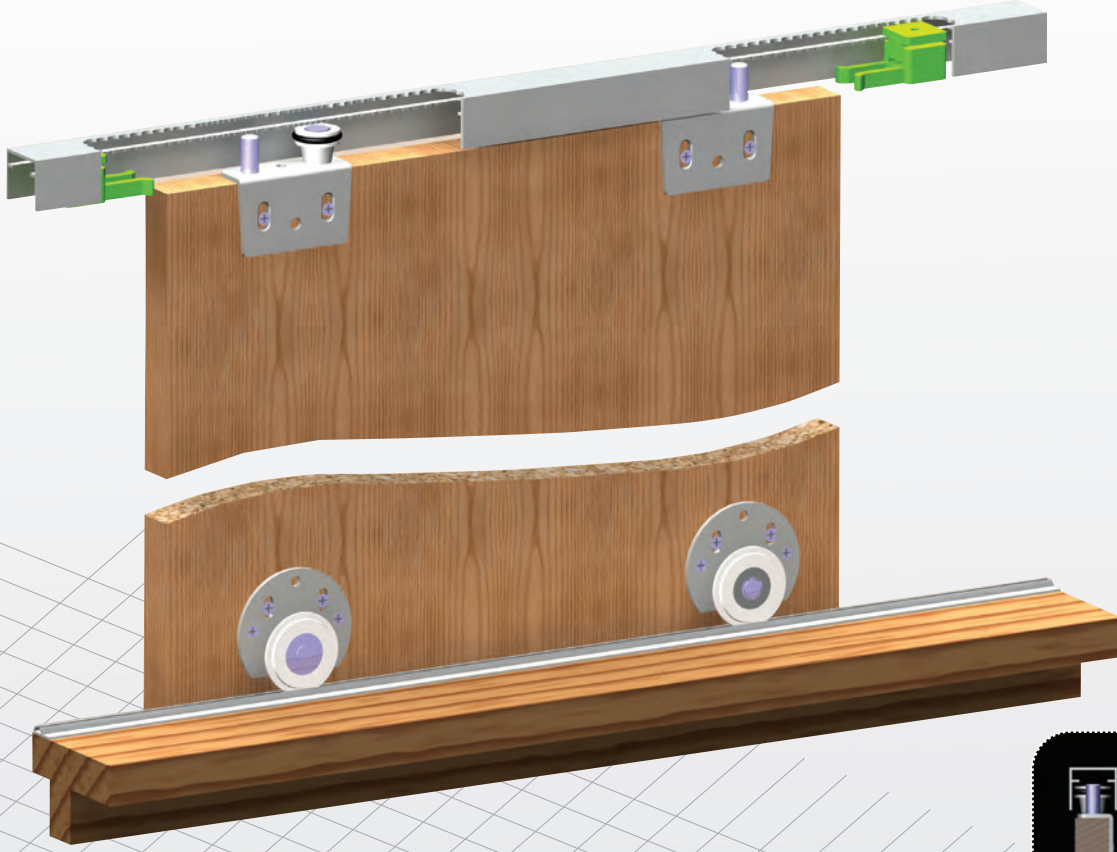


70270



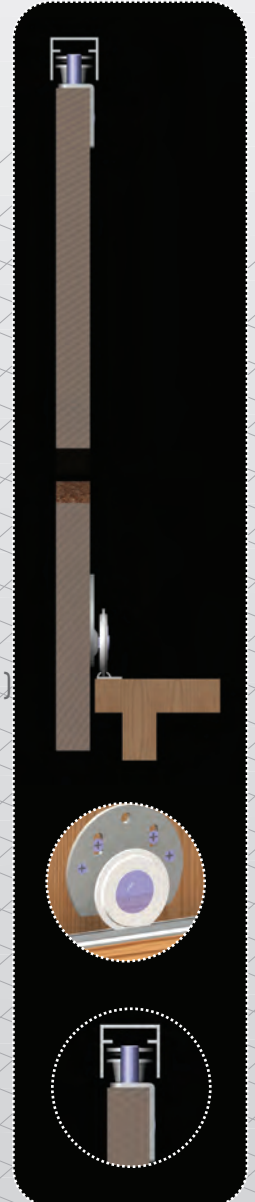
KOD	AÇIKLAMA	KUTU	KOLİ
70270	SKM 37-1 Mekanizma Takım	4 Tk	144 Tk

KOD	AÇIKLAMA	KUTU	KOLİ
70285	Tek Makara	24 Ad	864 Ad
70155	Üst Kılavuz	8 Tk	192 Tk
70015	Stoper	40 Ad	960 Ad



**70270 SKM 37-1 (35~40 Kg. Hafif Sürgü Kapak Mekanizması)**

SKM 37-1 hafif sürgü kapak mekanizmasıdır.  
35~40 Kg taşıma kapasitelidir.  
Üst ray çiftli olarak 60025 profili kullanılır.  
Tekli üst ray olarak 60280 profili kullanılır.  
Tekli alt ray olarak 60500 profili kullanılır.



## SKM 38 (35~40 Kg. Hafif Sürgü Kapak Mekanizması)

70255



• PVC üst ray tekli

60215

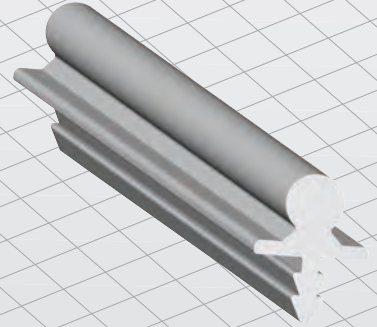
\*Bk.: S.9



• Tekli alt ray

60040

\*Bk.: S.8



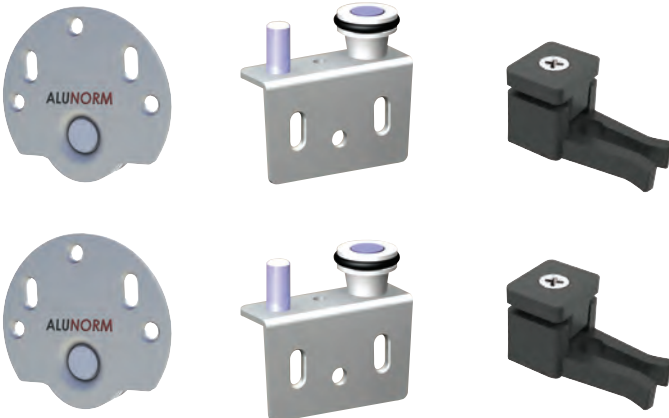
70015



70155

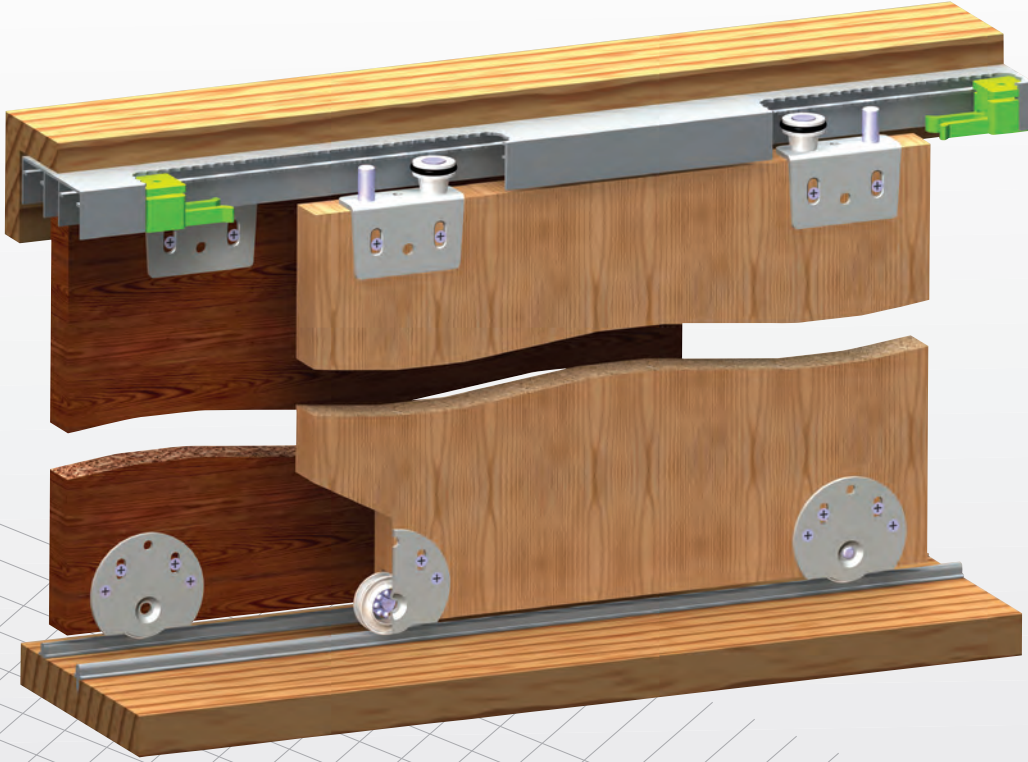


70290



KOD	AÇIKLAMA	KUTU	KOLİ
70290	SKM 38 Mekanizma Takım	4 Tk	144 Tk

KOD	AÇIKLAMA	KUTU	KOLİ
70255	Tek Makara	24 Ad	864 Ad
70155	Üst Kılavuz	8 Tk	192 Tk
70015	Stoper	40 Ad	960 Ad



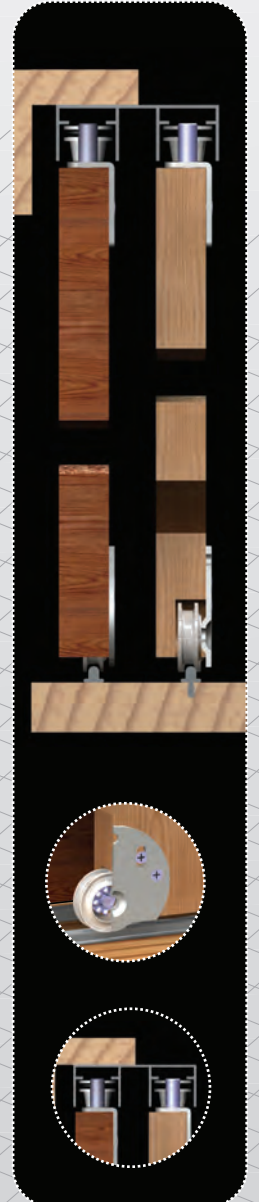
**70290 SKM 38 (35~40 Kg. Hafif Sürgü Kapak Mekanizması)**

SKM 38 hafif sürgü kapak mekanizmasıdır.

35~40 Kg taşıma kapasitelidir.

Üst ray olarak 60215 PVC kullanılır.

Alt ray olarak 60040 profili kullanılır.



## SPRING Tek Teker Mekanizma (Gama)

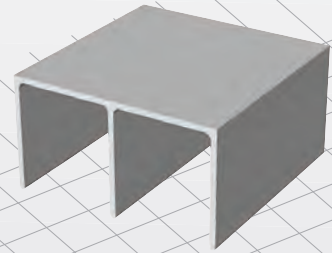
(2 AD / TK)

70070



60050

\*Bk.: S.10

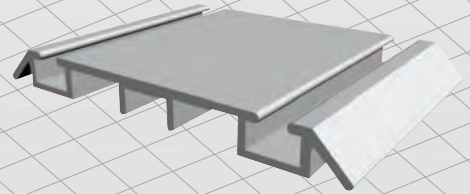


(2 AD / TK)



60080

\*Bk.: S.11

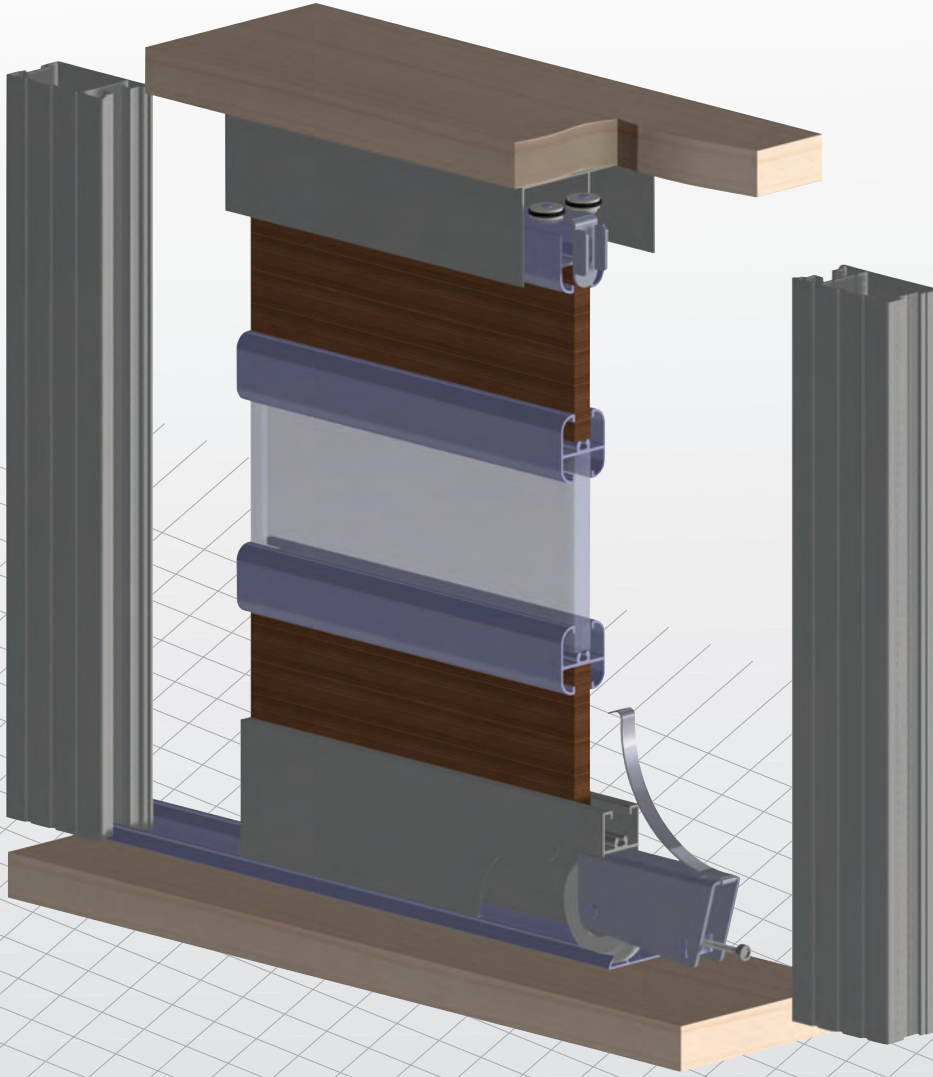


70070

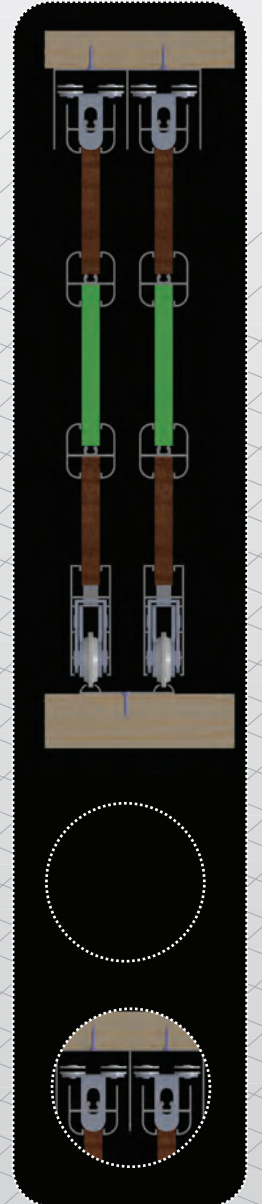
(TAKIM RESMİ)



KOD	AÇIKLAMA	KUTU	KOLİ
70070	Spring Tek Teker Mekanizma Takım	1 Tk	50 Tk



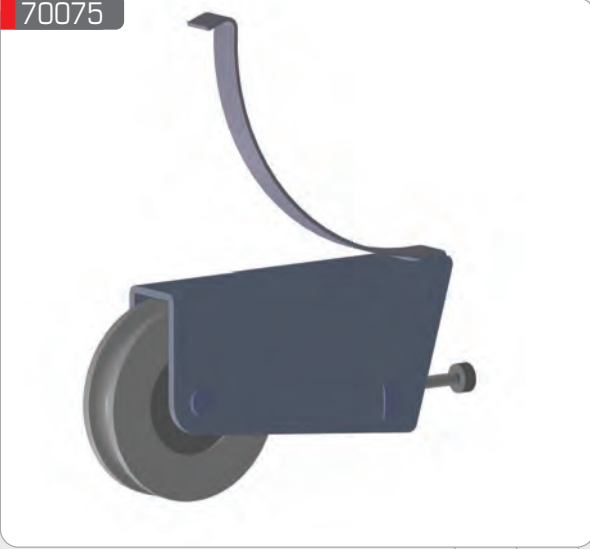
70070 Sürgülü Kapak Mekanizması (Gama)



## SPRING Tek Teker Mekanizma (Beta)

(2 AD / TK)

70075



(2 AD / TK)



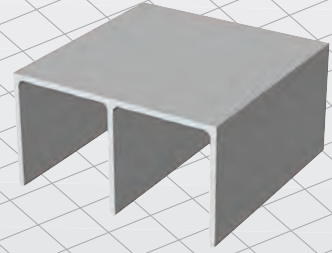
70075

(TAKIM RESMİ)



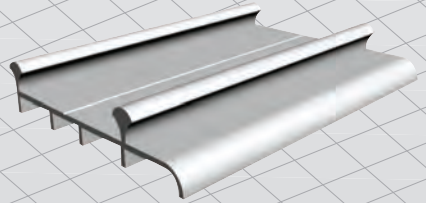
60050

\*Bk.: S.10

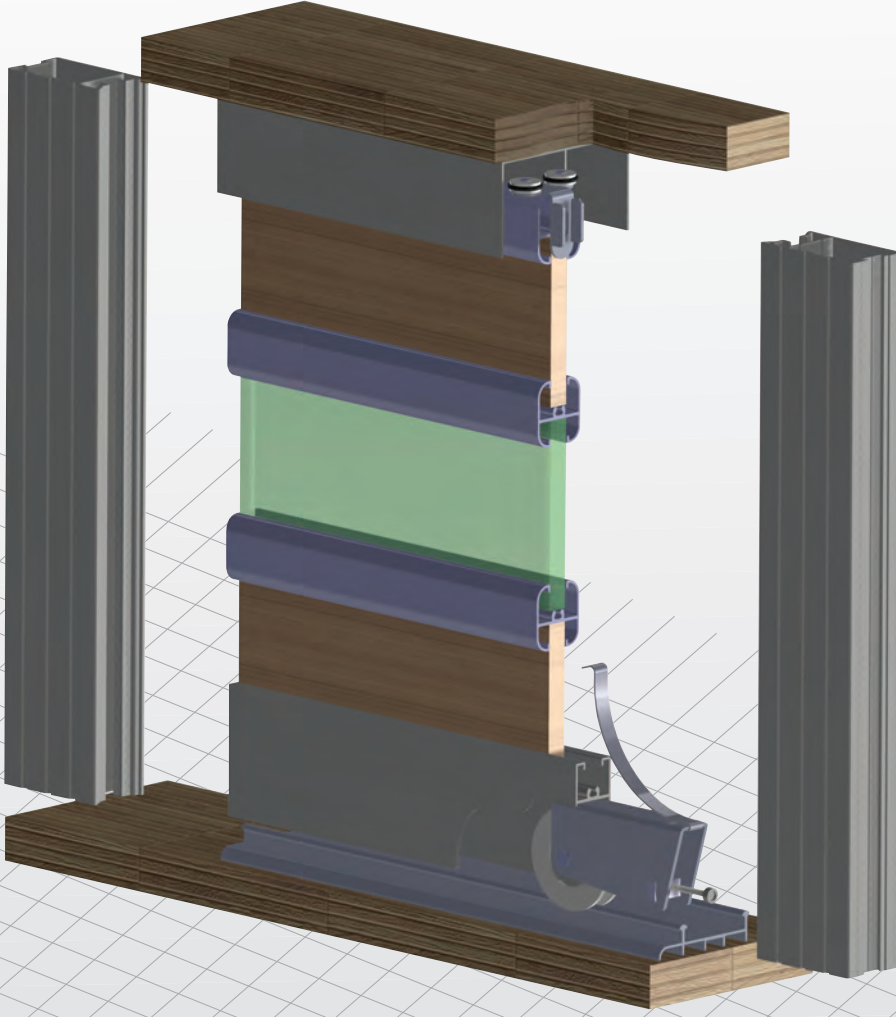


60085

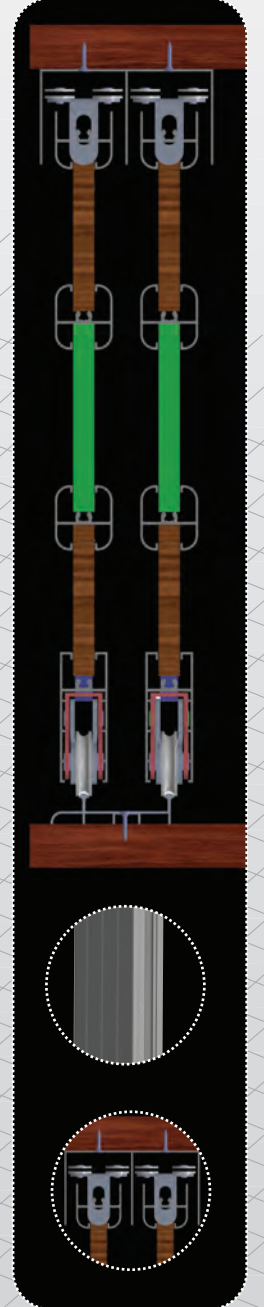
\*Bk.: S.11



KOD	AÇIKLAMA	KUTU	KOLİ
70075	Spring Tek Teker Mekanizma Takım	1 Tk	50 Tk



70075 Sürgülü Kapak Mekanizması (Beta)

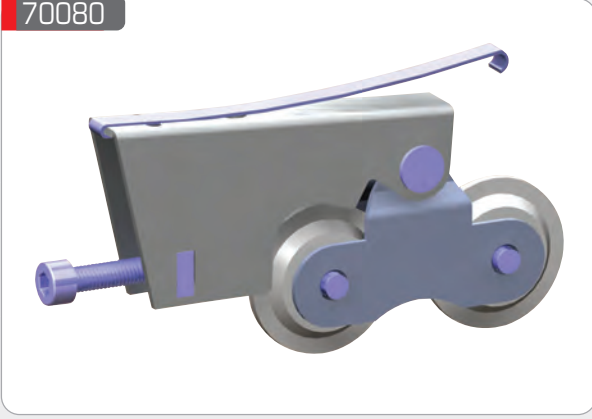




## SPRING Çift Teker Mekanizma (Gama)

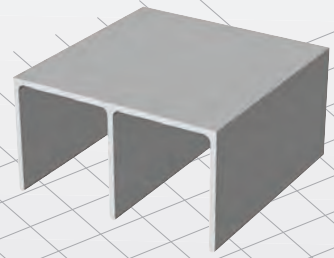
(2 AD / TK)

70080



60050

\*Bk.: S.10

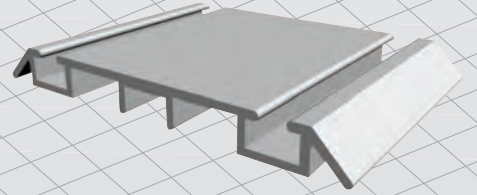


(2 AD / TK)



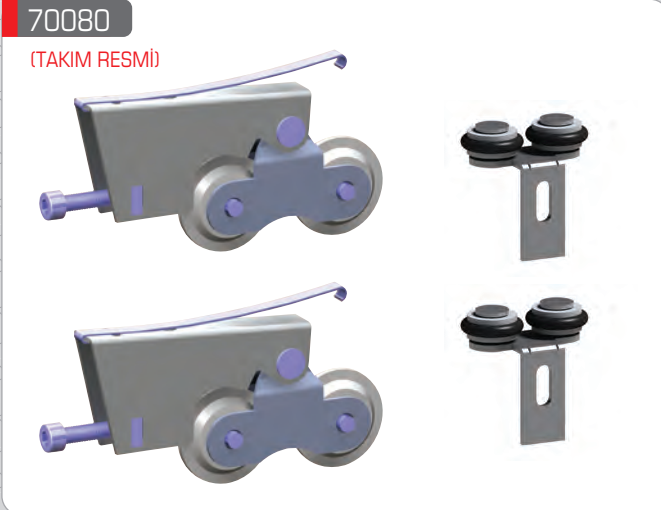
60080

\*Bk.: S.11

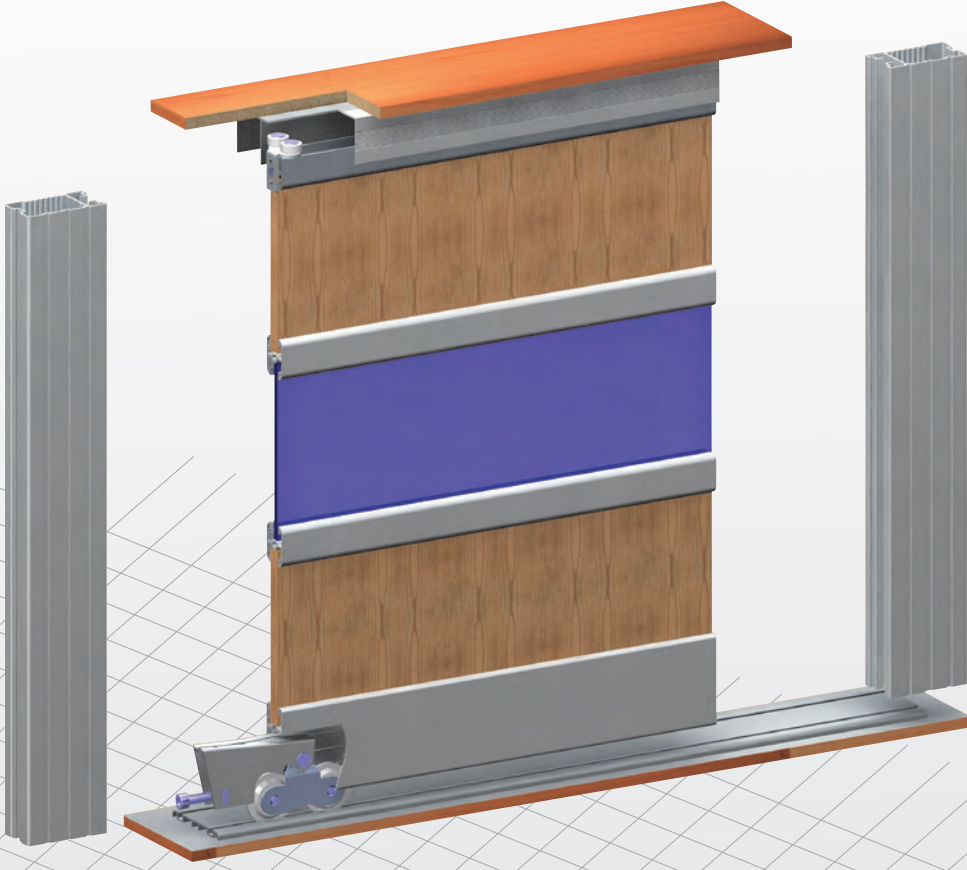


70080

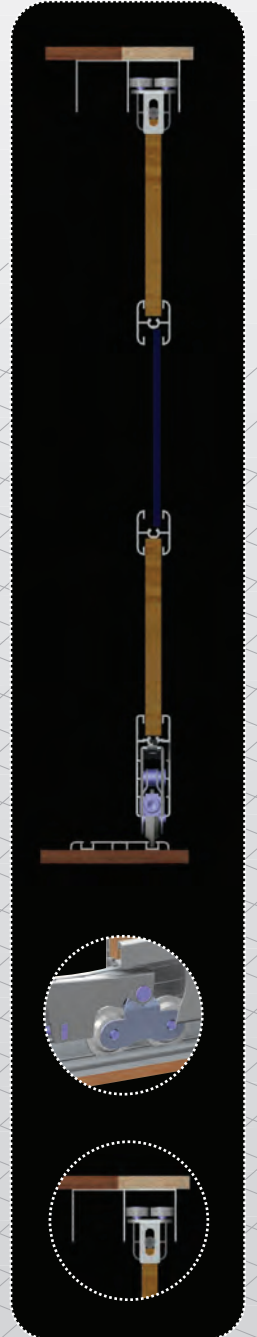
(TAKIM RESMİ)



KOD	AÇIKLAMA	KUTU	KOLİ
70080	Spring Çift Teker Mekanizma Takım	1 Tk	50 Tk



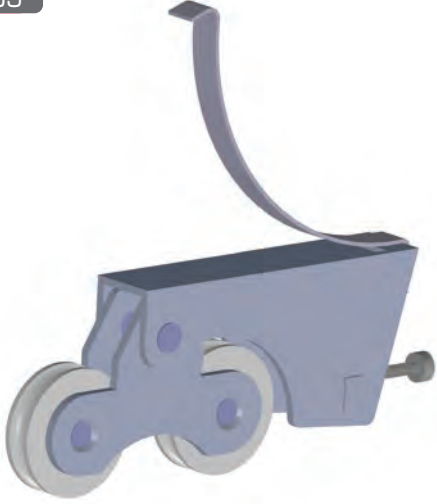
70080 Sürgülü Kapak Mekanizması (Gama)



## SPRING Çift Teker Mekanizma (Beta)

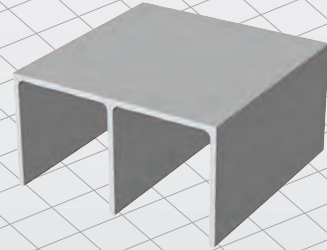
(2 AD / TK)

70085



60050

\*Bk.: S.10

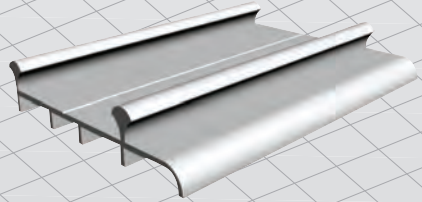


(2 AD / TK)



60085

\*Bk.: S.11

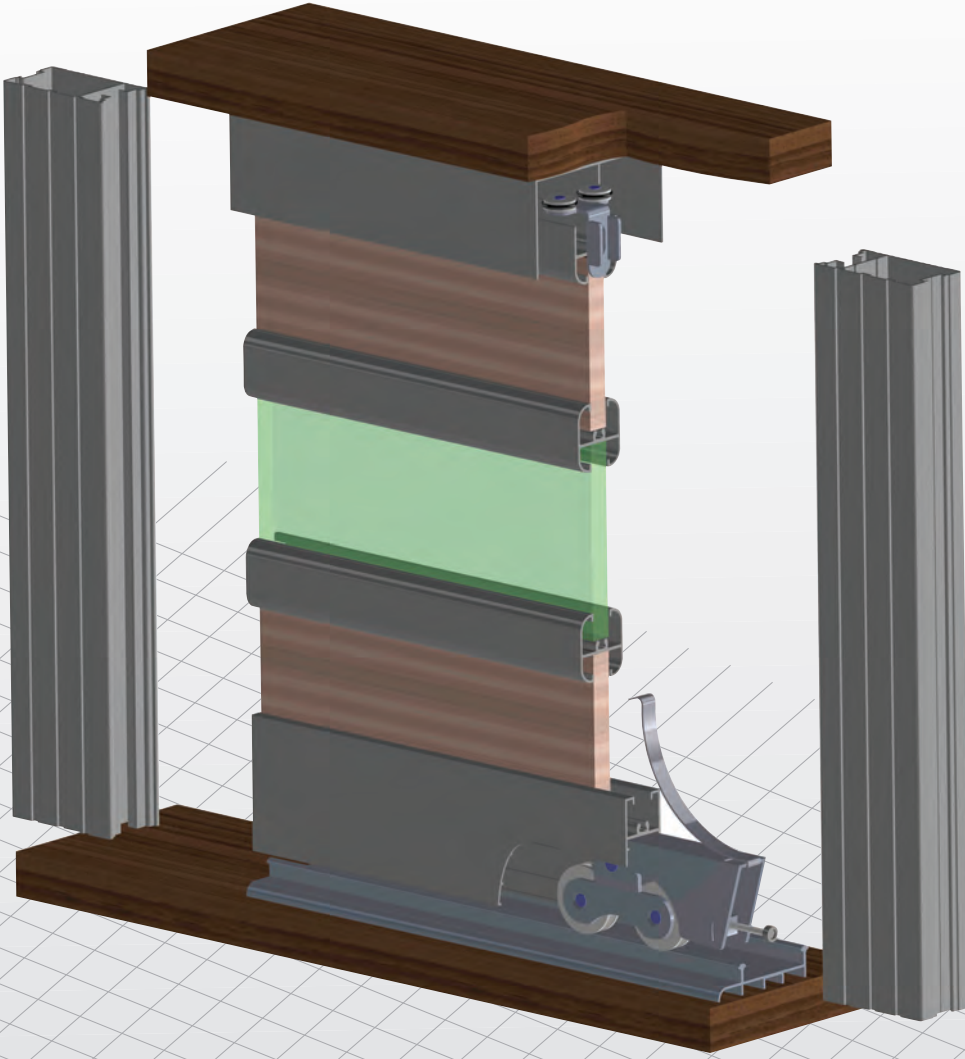


70085

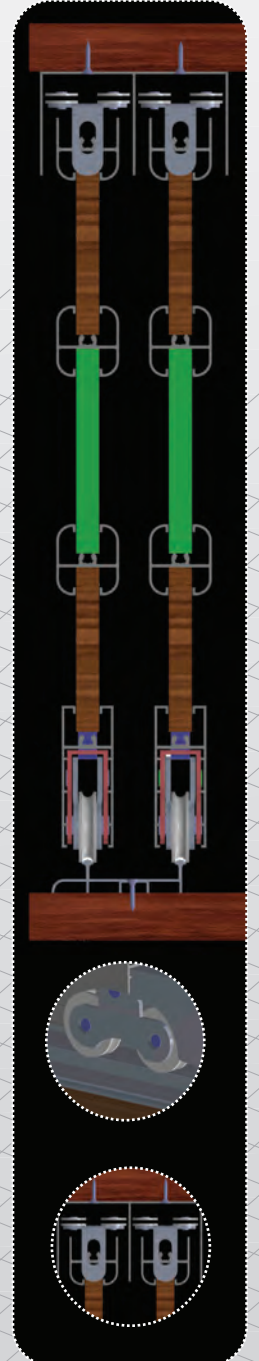
(TAKIM RESMİ)



KOD	AÇIKLAMA	KUTU	KOLİ
70085	Spring Çift Teker Mekanizma Takım	1 Tk	50 Tk



70085 Sürgülü Kapak Mekanizması (Beta)



## SKM 60 Ayarlı Mekanizma

(2 AD / TK)

70335



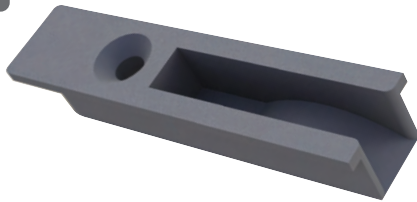
(2 AD / TK)

70260



(2 AD / TK)

70265

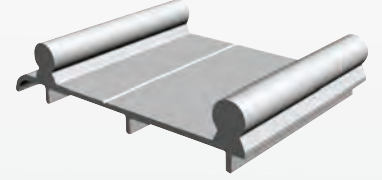


70330



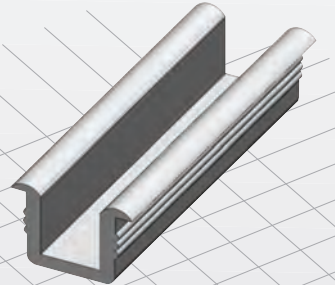
60030

\*Bk.: S.6



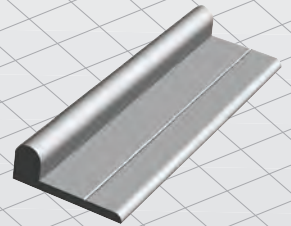
60215

\*Bk.: S.9



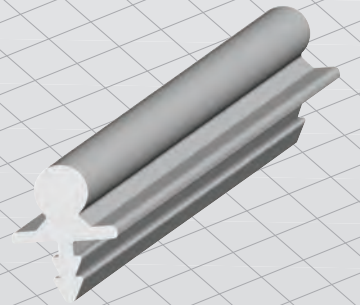
60285

\*Bk.: S.8



60035

\*Bk.: S.8



KDD	AÇIKLAMA	ÇUTU	KOLİ
70330	SKM 60 kg Ayarlı Mekanizma Takım	2 Tk	48 Tk

KDD	AÇIKLAMA	ÇUTU	KOLİ
70335	Tek Makara	6 Ad	144 Ad
70260	Üst Kılavuz	14 Tk	504 Tk
70265	Stoper	50 Ad	1800 Ad



### 70330 (60 Kg Ayarlı Sürgü Kapak Mekanizması)

60 Kg taşıma kapasitelidir.  
Çiftli alt ray için 60030 profili kullanılır.  
Tekli alt ray için 60285 / 60035 profilleri kullanılır.  
Üst ray olarak 60215 PVC kullanılır.



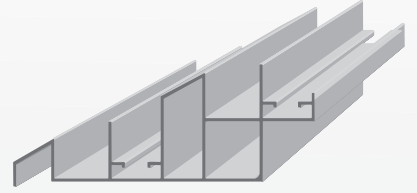
## Üstten Askı Mekanizması (Ayarlı)

70600



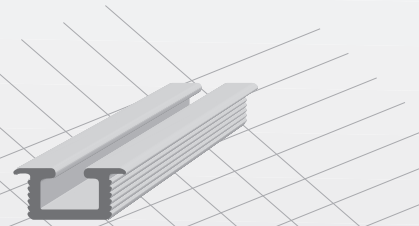
60026

\*Bk.: S.6

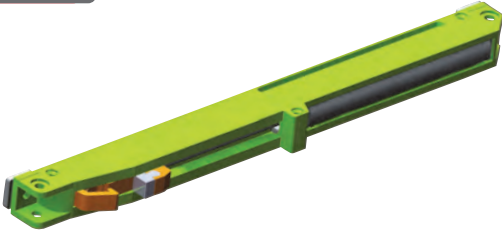


60626

\*Bk.: S.9

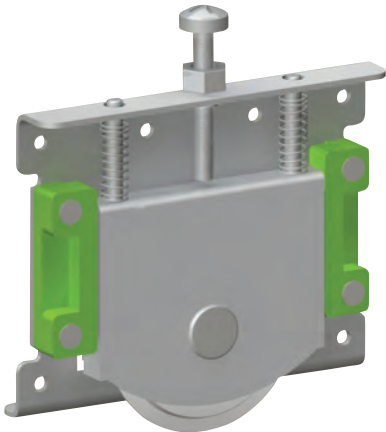


38902



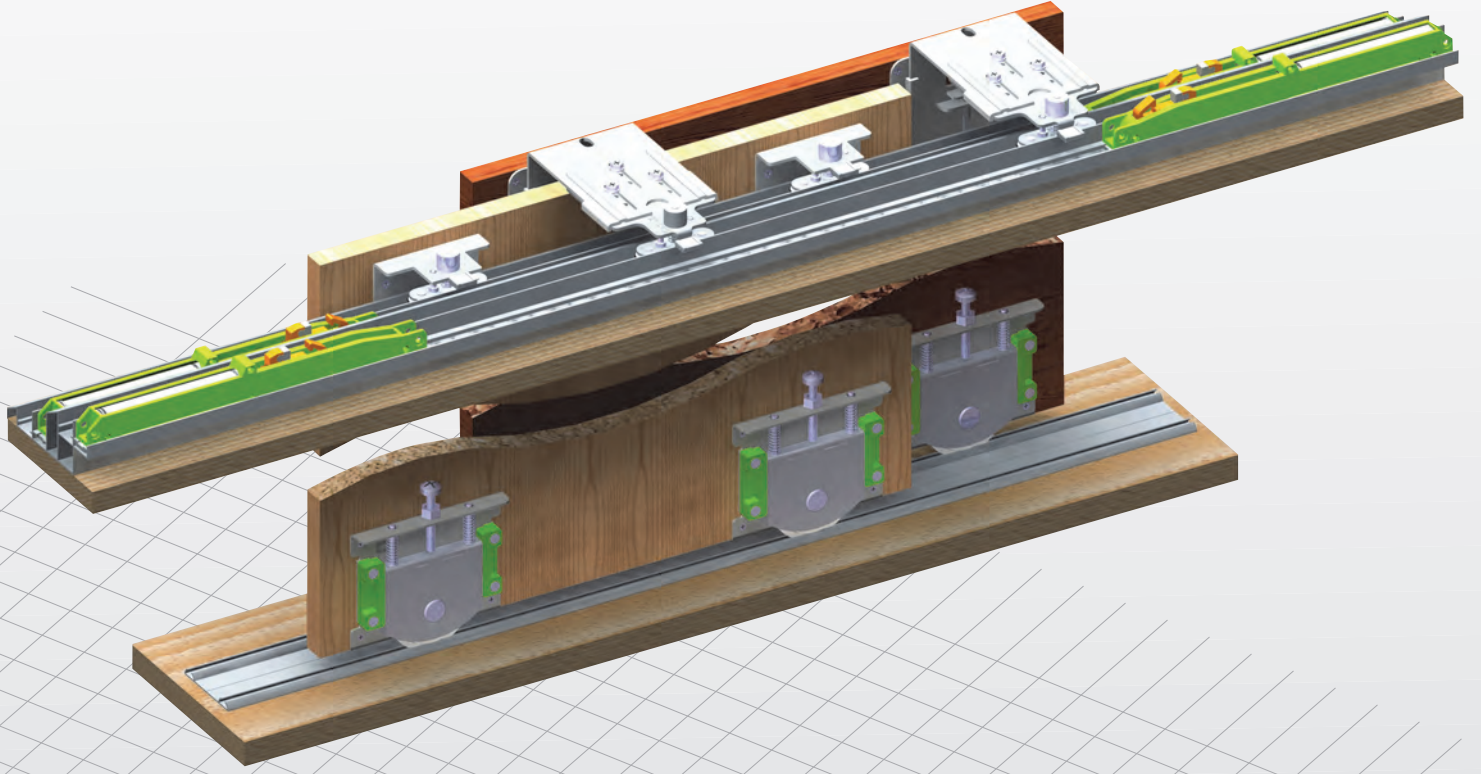
RAY İÇİ YAVAŞLATICI

70220



KOD	AÇIKLAMA	KUTU	KOLİ
70600	Üstten Askı Mekanizması (Ayarlı)	2 Tk	48 Tk

KOD	AÇIKLAMA	KUTU	KOLİ
38902	Ray İçi Yavaşlatıcı	4 Ad	100 Ad
70220	PKM 80 Plastikli	4 Ad	80 Ad



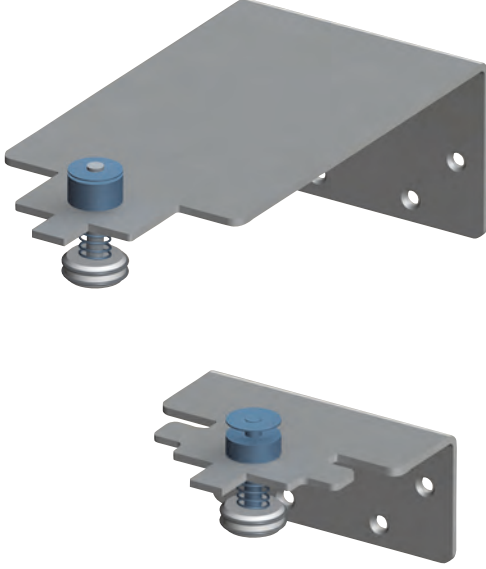
### 70600 ( Üstten Askı Mekanizma Takımı -Ayarlı- )

Üstten ayarlı kapak mekanizması frenli sistemdir.  
Ray olarak 60026 kodlu profil kullanılmaktadır.  
Kapak alt mekanizması olarak PKM 80 (Plastikli) kullanılmaktadır.  
Alt ray olarak 60626 kodlu profil kullanılmaktadır.



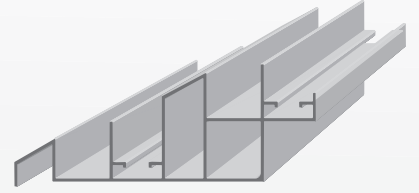
## Üstten Askı Mekanizması ( Ayarsız )

70650



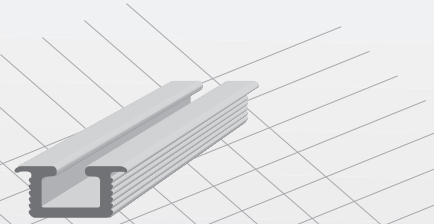
60026

\*Bk.: S.6

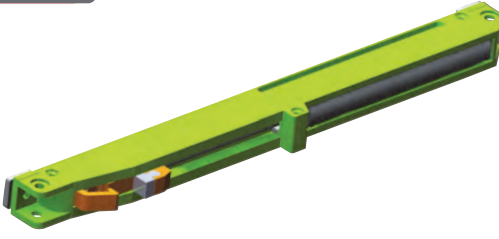


60626

\*Bk.: S.9

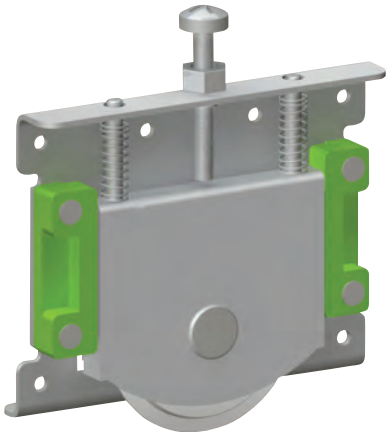


38902



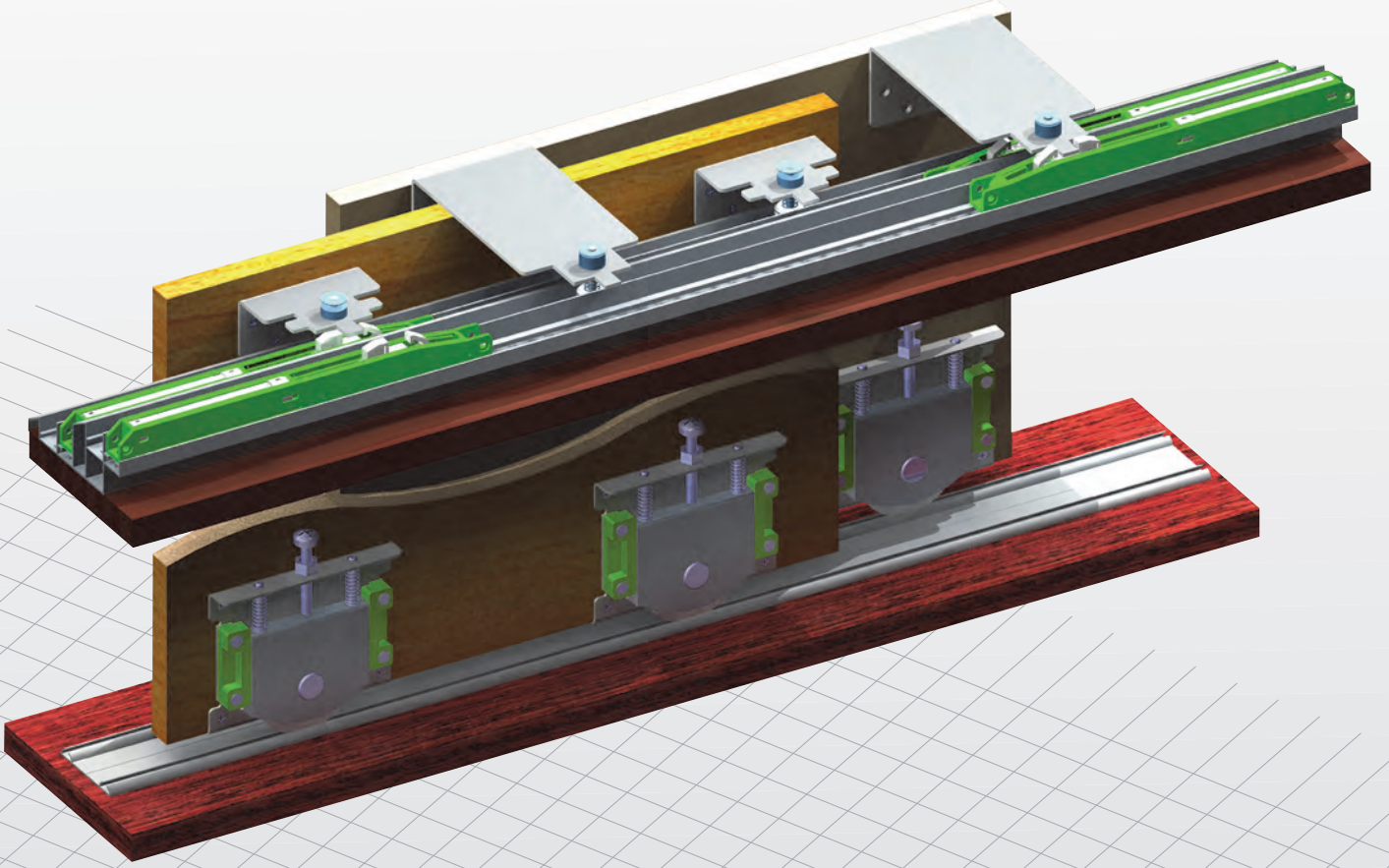
RAY İÇİ YAVAŞLATICI

70220



KOD	AÇIKLAMA	KUTU	KOLİ
70650	Üstten Askı Mekanizması (Ayarsız)	2 Tk	48 Tk

KOD	AÇIKLAMA	KUTU	KOLİ
38902	Ray İçi Yavaşlatıcı	4 Ad	100 Ad
70220	PKM 80 Plastikli	4 Ad	80 Ad



### 70650 ( Üstten Askı Mekanizma Takımı -Ayarsız- )

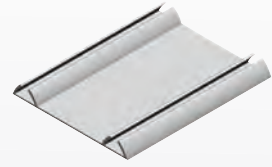
Üstten ayarsız kapak mekanizması frenli sistemdir.  
Ray olarak 60026 kodlu profil kullanılmaktadır.  
Kapak alt mekanizması olarak PKM 80 (Plastikli) kullanılmaktadır.  
Alt ray olarak 60626 kodlu profil kullanılmaktadır.

## PKM 80 KÜÇÜK (PLASTİKLİ)

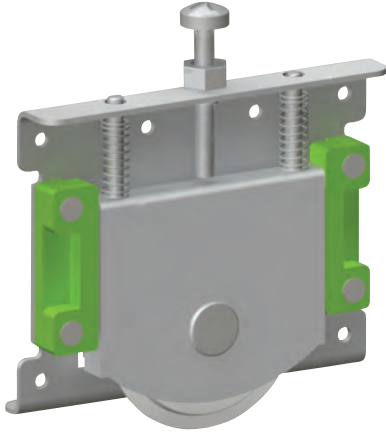
•Alt ve üst ray 55 mm

60270

\*Bk.: S.7



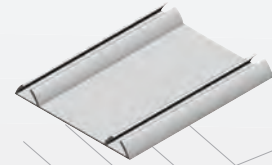
70230



•Alt ve üst ray 60 mm

60275

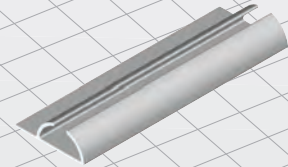
\*Bk.: S.7



•Tekli alt ray 24 mm

60500

\*Bk.: S.8



70155

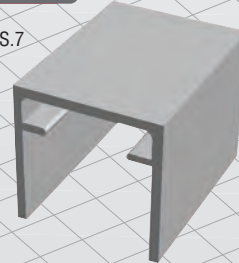


70015



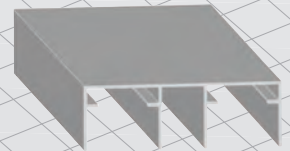
60280

\*Bk.: S.7

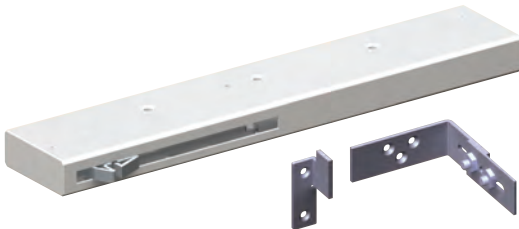


60025

\*Bk.: S.6



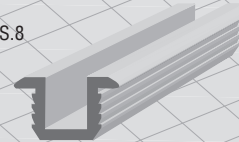
38901



SOFT SİSTEM

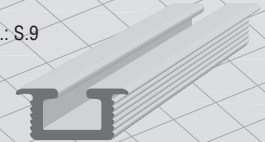
60625

\*Bk.: S.8

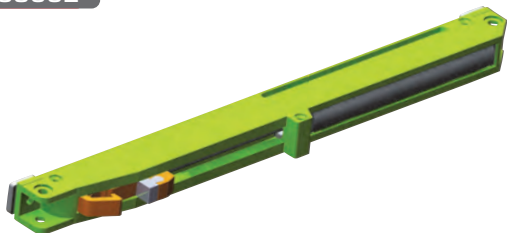


60626

\*Bk.: S.9



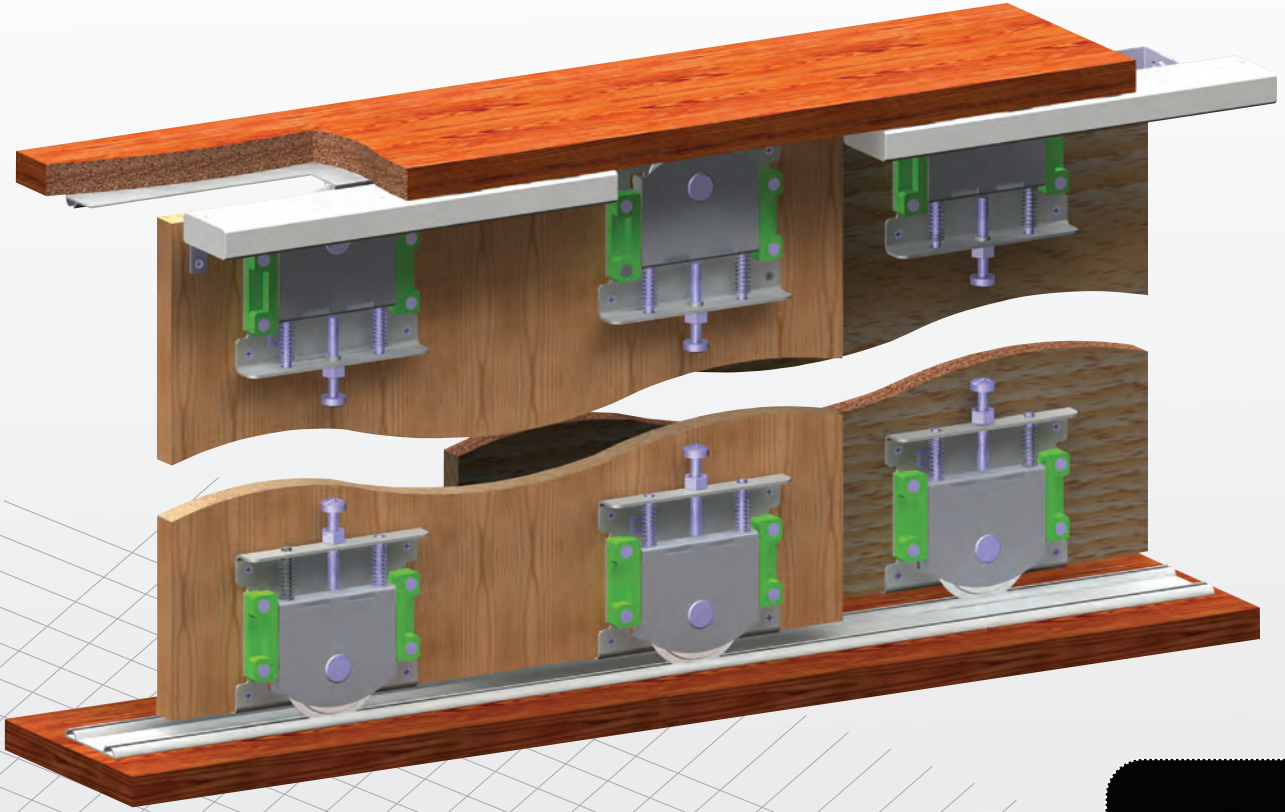
38902



RAY İÇİ YAVAŞLATICI

KOD	AÇIKLAMA	KUTU	KOLİ
70230	PKM 80 Küçük (Plastikli)	4 Ad	144 Ad

KOD	AÇIKLAMA	KUTU	KOLİ
38901	Soft Sistem	2 Ad	24 Ad
38902	Ray İçi Yavaşlatıcı	4 Ad	100 Ad
70155	Üst Kılavuz	8 Tk	192 Tk
70015	Stoper	40 Ad	960 Ad



### 70230 ( 80 Kg Pano Mekanizma Takımı (Küçük) -Plastikli- )

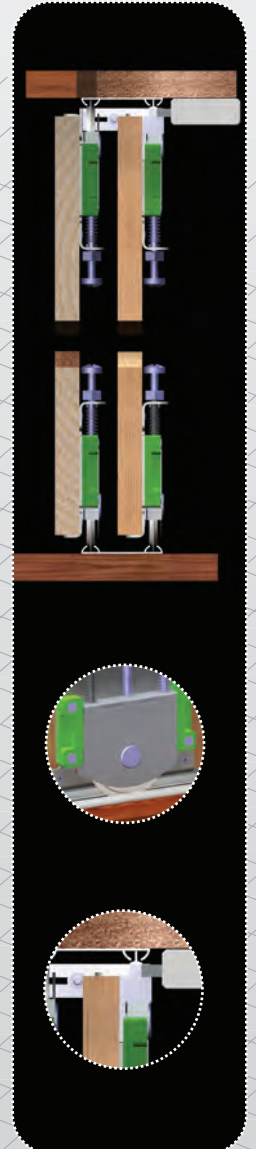
PKM 80 Plastikli Sürgü Kapak Mekanizması, 80 KG taşıma kapasitelidir.

Alt ve üst poliamid kaplı rulmanlı tekerlekle çalışır.

Alt ve üst ray olarak 60270 / 60275 profilleri kullanılır.

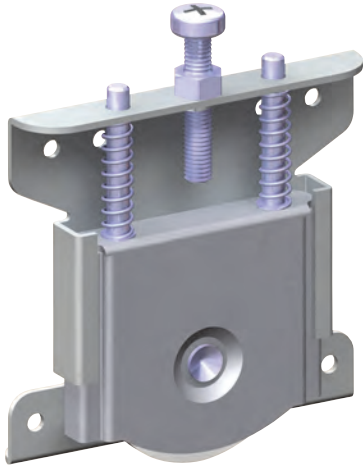
Tekli alt ray olarak 60500 / 60625 / 60626 kodlu profiller kullanılır.

Üst mekanizma değişmesi halinde, çiftli üst ray 60025 veya tekli üst ray 60280 kodlu profil kullanılır.



## PKM 80 KÜÇÜK (METAL)

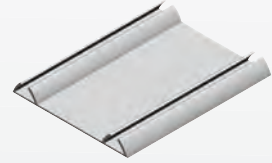
70210



• Alt ve üst ray 55 mm

60270

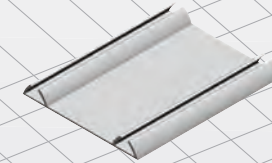
\*Bk.: S.7



• Alt ve üst ray 60 mm

60275

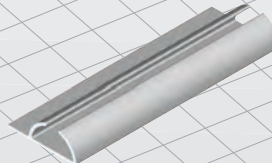
\*Bk.: S.7



• Tekli alt ray 24 mm

60500

\*Bk.: S.8



70155

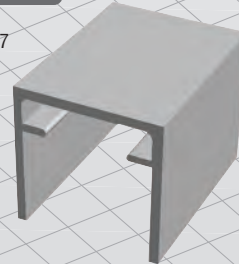


70015



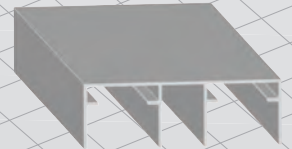
60280

\*Bk.: S.7



60025

\*Bk.: S.6

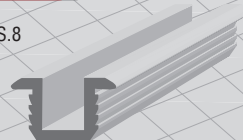


KOD	AÇIKLAMA	KUTU	KOLİ
70210	PKM 80 Küçük (Metal)	4 Ad	80 Ad

KOD	AÇIKLAMA	KUTU	KOLİ
70155	Üst Kılavuz	8 Tk	192 Tk
70015	Stoper	40 Ad	960 Ad

60625

\*Bk.: S.8



60626

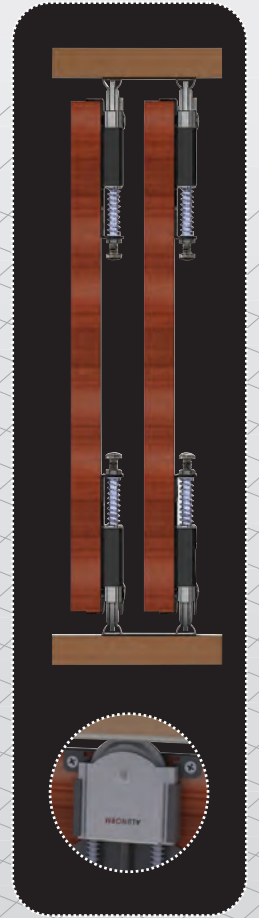
\*Bk.: S.9





### 70210 ( 80 Kg Pano Mekanizma Takımı (Küçük) -Metal- )

PKM 80 Ayarlı Sürgü Kapak Mekanizması, 80 KG taşıma kapasitelidir.  
Alt ve üst poliamid kaplı rulmanlı tekerlekle çalışır.  
Alt ve üst mekanizması olarak kullanılır.  
Üst kılavuz ile birlikte alt mekanizma olarak kullanılır.  
Üst kılavuz kullanıldığında, çiftli üst ray olarak 60025, tekli olarak 60280 kodlu raylar kullanılır.



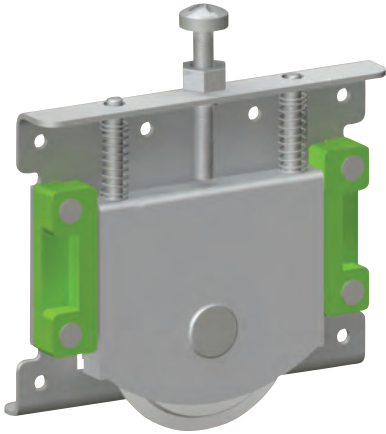
## Üstten Askı Mekanizması ( Çene Takımı )

70700

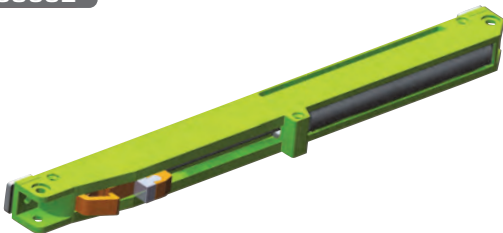
Yeni Çene Mekanizması



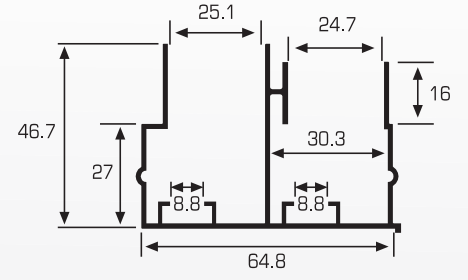
70220



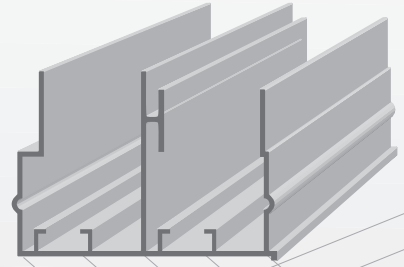
38902



RAY İÇİ YAVAŞLATICI

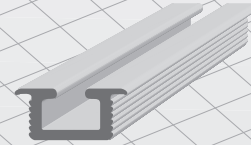


60052



KOD	MT / BOY	YÜZEY	1 PK. / AD
60052,507	2,5	Press	40

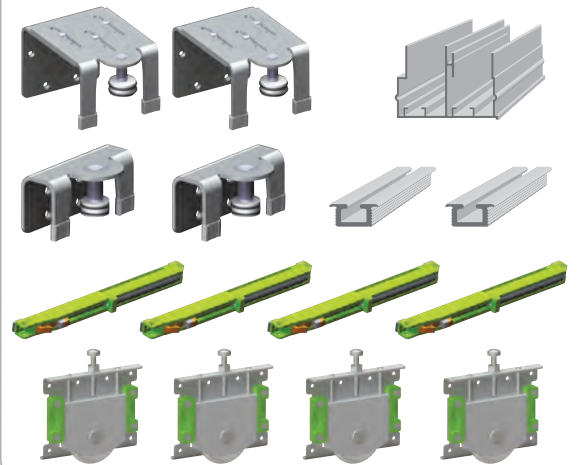
60626



KOD	MT / BOY	YÜZEY	1 PK. / AD
60626,507	2,5	Press	50

70800

Üstten Askı Mekanizması (Çene Takımı)



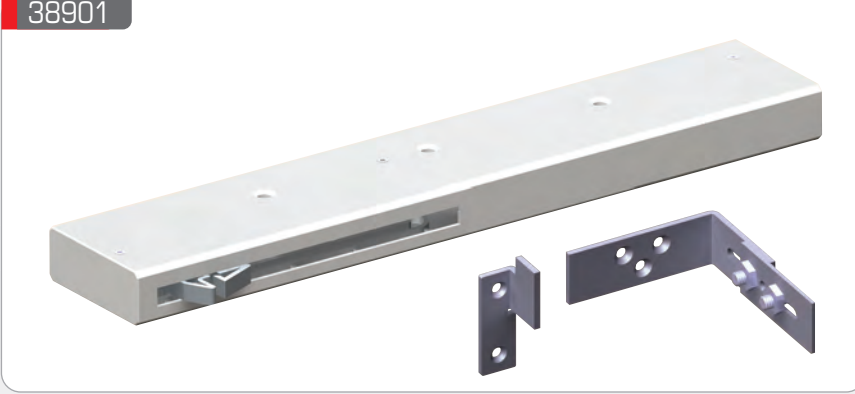
KOD	AÇIKLAMA	KUTU	KOLİ
70700	Üstten Askı Mekanizması (Çene Takımı)	2 Tk	48 Tk

KOD	AÇIKLAMA	KUTU	KOLİ
38902	Ray İçi Yavaşlatıcı	4 Ad	100 Ad
70220	PKM 80 Plastikli	4 Ad	80 Ad

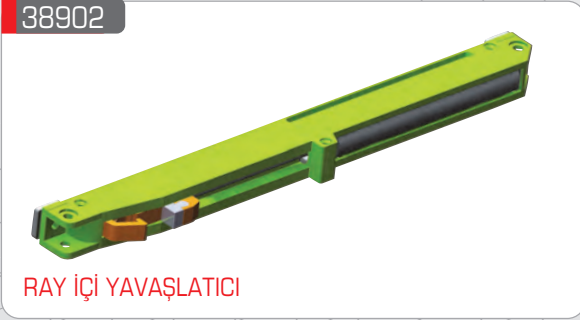
SOFT SİSTEM (Kapak Frenleme Sistemi)

(2 AD / TK)

38901

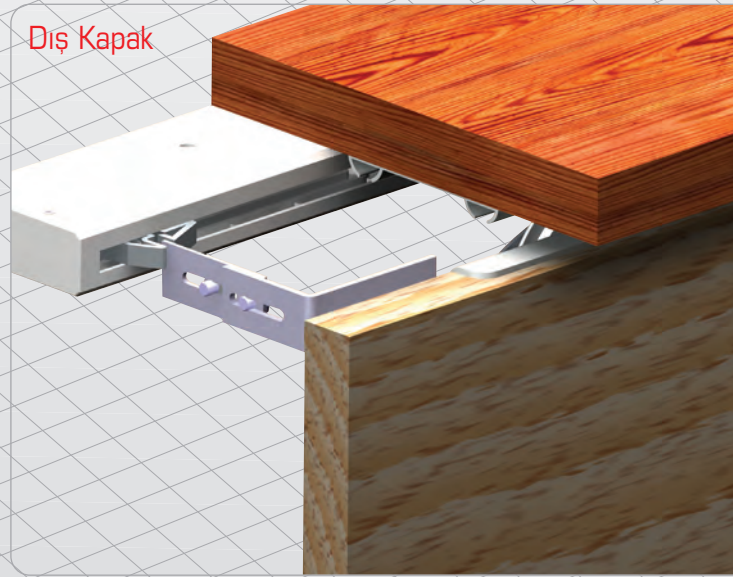


38902



RAY İÇİ YAVAŞLATICI

Dış Kapak



İç Kapak



KOD	AÇIKLAMA	KUTU	KOLİ
38901	Soft Sistem	2 Ad	24 Ad
38902	Ray İçi Yavaşlatıcı	4 Ad	100 Ad